

COURSE REGISTRATION REPORT
UNIVERSITY OF HAWAI'I, COMMUNITY COLLEGES
FALL 2005

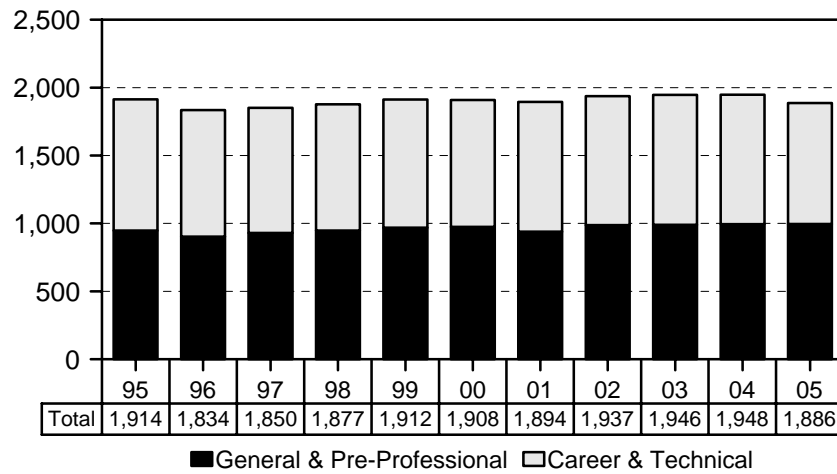
Institutional Research Office
University of Hawai'i
September 2006

File Reference: Management and Planning Support Folder, Courses

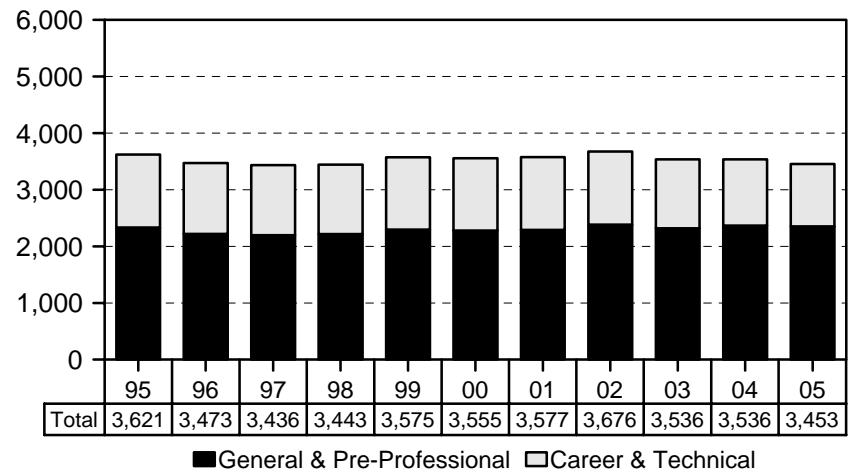
Reports available online at: <http://www.hawaii.edu/iro/maps.htm>

University of Hawai'i Community Colleges, Fall Semesters 1995 - 2005

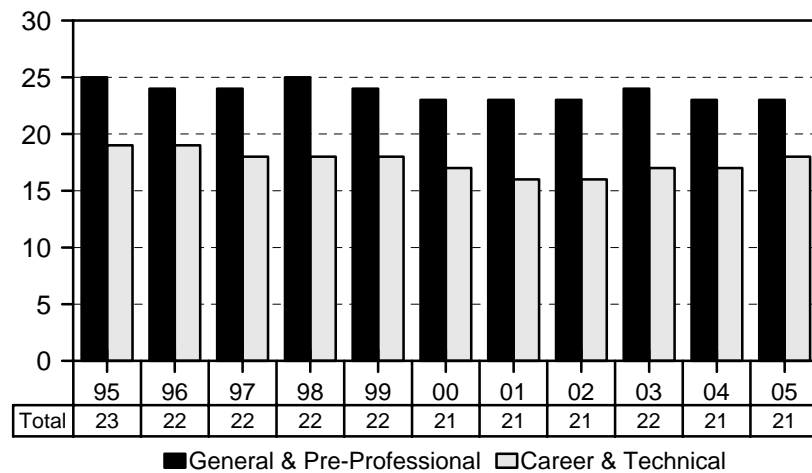
Number of Courses



Number of Classes



Average Class Size



Student Semester Hours

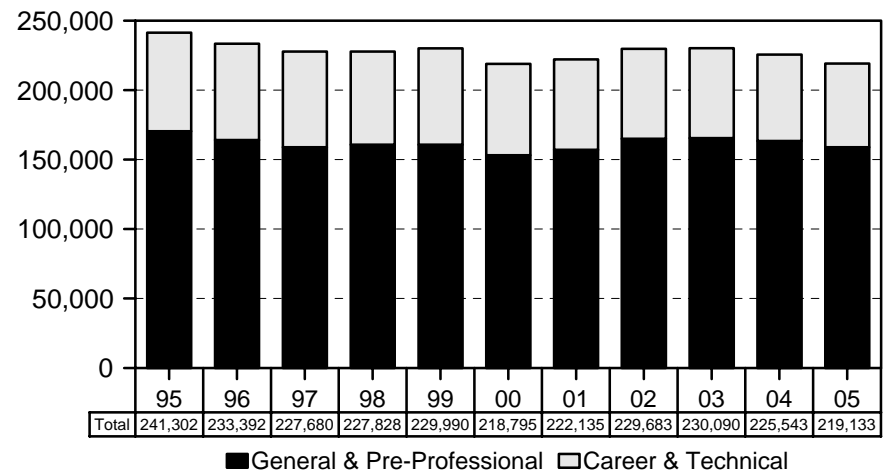


TABLE 1
 COURSE REGISTRATION SUMMARY, BY CAMPUS
 UNIVERSITY OF HAWAI'I, COMMUNITY COLLEGES
 FALL 1995 TO FALL 2005

COLLEGE and YEAR	COURSES	1/ CLASSES	SEMESTER HOURS 2/	STUDENT REGIS	STUDENT SEM HRS	COURSE FTE	CONTACT HOURS	
							Student	Instr
TOTAL								
1995	1,914	3,621	10,734	82,752	241,302	16,075	313,450	11,575
1996	1,834	3,473	10,442	78,263	233,392	15,558	311,945	11,003
1997	1,850	3,436	10,474	75,878	227,680	15,168	312,175	11,213
1998	1,877	3,443	10,405	77,865	227,828	15,184	303,215	10,406
1999	1,912	3,575	10,903	78,496	229,990	15,335	307,269	10,912
2000	1,908	3,555	10,816	74,049	218,795	14,582	284,174	10,441
2001	1,894	3,577	10,899	74,820	222,135	14,798	281,726	10,173
2002	1,937	3,676	11,054	77,675	229,683	15,305	NOT AVAILABLE 3/	
2003	1,946	3,536	10,630	78,062	230,090	15,331		
2004	1,948	3,536	10,581	76,633	225,543	15,033		
2005	1,886	3,453	10,320	74,174	219,133	14,609		
HAWAI'I								
1995	247	478	1,355	10,866	30,020	2,001	44,487	1,367
1996	235	425	1,339	8,324	25,760	1,718	36,421	1,242
1997	224	399	1,253	7,822	23,799	1,584	34,773	1,214
1998	244	405	1,247	7,948	23,893	1,596	35,431	1,186
1999	242	407	1,256	7,834	23,447	1,564	32,540	1,104
2000	245	425	1,288	7,244	21,475	1,429	30,155	1,134
2001	255	410	1,240	7,029	20,678	1,378	29,326	1,083
2002	264	422	1,248	7,283	21,444	1,428	NOT AVAILABLE 3/	
2003	279	425	1,256	7,711	22,461	1,497		
2004	283	422	1,236	7,864	22,832	1,523		
2005	284	420	1,234	7,719	22,207	1,476		
HONOLULU								
1995	342	536	1,811	12,017	39,384	2,621	63,444	1,605
1996	338	527	1,710	11,596	36,948	2,466	61,793	1,407
1997	341	500	1,640	11,328	36,387	2,426	62,785	1,427
1998	358	509	1,649	13,861	38,361	2,554	73,790	1,392
1999 4/	395	623	2,013	15,246	42,742	2,849	83,796	1,900
2000	381	615	2,009	14,085	40,831	2,722	74,697	1,765
2001	365	625	2,049	13,828	40,641	2,704	73,036	1,740
2002	364	591	1,928	13,721	39,945	2,656	NOT AVAILABLE 3/	
2003	361	565	1,862	12,726	36,724	2,446		
2004	357	591	1,828	13,084	37,178	2,477		
2005	343	580	1,785	12,535	35,989	2,401		
KAPI'OLANI								
1995	398	912	2,755	21,367	63,289	4,214	76,280	2,830
1996	383	875	2,668	21,468	65,021	4,332	83,042	2,555
1997	382	877	2,730	20,942	63,929	4,260	81,454	2,575
1998	388	875	2,651	21,233	63,606	4,239	69,106	2,227
1999	372	907	2,750	21,664	64,968	4,333	70,444	2,330
2000	379	896	2,757	20,300	61,783	4,117	67,565	2,318
2001	370	908	2,785	21,004	63,795	4,253	70,229	2,348
2002	396	963	2,935	20,967	63,381	4,225	NOT AVAILABLE 3/	
2003	409	984	2,897	21,783	64,616	4,308		
2004	431	963	2,913	20,544	62,076	4,138		
2005	414	936	2,806	20,577	62,073	4,142		

TABLE 1 (cont.)

COLLEGE and YEAR	COURSES	1/ CLASSES	SEMESTER HOURS 2/	STUDENT REGIS	STUDENT SEM HRS	COURSE FTE	CONTACT HOURS	
							Student	Instr
KAUA'I								
1995	181	266	730	4,810	12,816	853	17,597	963
1996	164	229	675	4,398	12,469	830	16,587	862
1997	167	219	692	4,026	12,099	803	15,387	807
1998	159	211	656	3,502	10,505	699	13,569	724
1999	167	210	648	3,320	9,831	654	12,314	705
2000	164	207	634	3,115	9,161	611	11,418	639
2001	159	198	602	3,226	9,386	624	12,478	667
2002	174	219	637	3,451	10,093	672	NOT AVAILABLE 3/	
2003	167	211	597	3,477	9,924	658		
2004	164	203	578	3,207	9,190	614		
2005	162	196	560	3,115	8,874	592		
LEEWARD								
1995	306	837	2,449	19,787	58,244	3,883	69,948	3,178
1996	302	807	2,375	18,723	55,472	3,698	71,646	3,205
1997	308	822	2,430	18,360	54,332	3,621	74,758	3,488
1998	304	815	2,430	18,112	54,163	3,613	67,315	3,134
1999	305	803	2,429	17,285	51,898	3,460	62,742	3,100
2000	314	789	2,350	16,782	50,086	3,340	57,759	2,785
2001	318	794	2,387	17,230	51,726	3,447	55,461	2,619
2002	327	805	2,414	18,100	54,310	3,619	NOT AVAILABLE 3/	
2003	321	757	2,260	18,222	54,783	3,649		
2004	311	758	2,299	17,811	53,440	3,562		
2005	283	724	2,194	16,593	49,965	3,326		
MAUI								
1995	299	370	1,004	8,875	23,154	1,543	27,007	1,020
1996	282	400	1,073	9,048	24,132	1,607	28,626	1,153
1997	297	409	1,127	8,789	23,788	1,584	29,561	1,133
1998	295	427	1,190	8,549	23,909	1,592	30,534	1,218
1999	299	419	1,216	8,464	23,604	1,576	31,616	1,220
2000	288	413	1,181	8,001	22,417	1,493	29,168	1,237
2001	299	427	1,210	7,708	21,798	1,452	26,732	1,130
2002	268	442	1,221	8,668	24,462	1,633	NOT AVAILABLE 3/	
2003	264	369	1,098	8,521	24,883	1,660		
2004	277	390	1,132	8,784	25,222	1,682		
2005	269	382	1,121	8,534	25,055	1,672		
WINDWARD								
1995	141	222	630	5,030	14,395	960	14,687	612
1996	130	210	602	4,706	13,590	907	13,830	579
1997	131	210	602	4,611	13,346	890	13,457	569
1998	129	201	582	4,660	13,391	891	13,470	525
1999	132	206	591	4,683	13,500	899	13,817	553
2000	137	210	597	4,522	13,042	870	13,412	563
2001	128	215	626	4,795	14,111	940	14,464	586
2002	144	234	671	5,485	16,048	1,072	NOT AVAILABLE 3/	
2003	145	225	660	5,622	16,699	1,113		
2004	125	209	595	5,339	15,605	1,037		
2005	131	215	621	5,101	14,971	1,000		

1/ Excludes classes with catalog numbers 093, 193, 293 (Cooperative Education) and 099, 199, 299 (Directed Studies). Beginning Spring 2004, excludes Aerospace Studies and Military Science classes. Data have been adjusted for prior years.

2/ Excludes courses with catalog numbers 099, 199, 299 (Directed Studies).

3/ Contact hour data are no longer available from Spring 2002.

4/ Includes classes offered through the off-campus credit program, effective Fall 1999.

Note: Semester hours and student semester hours reported here may differ slightly from data source due to rounding.

SOURCE: Banner Operational Data Store (ODS), IRO_SOCAD and IRO_SOCEX.

TABLE 1A
 PERCENTAGE CHANGE IN COURSE REGISTRATION MEASURES, BY CAMPUS
 UNIVERSITY OF HAWAI'I, COMMUNITY COLLEGES
 FALL 1995 TO FALL 2005

COLLEGE and YEAR	COURSES	1/ CLASSES	SEMESTER HOURS 2/	STUDENT REGIS	STUDENT SEM HRS	COURSE FTE	CONTACT HOURS	
							Student	Instr
TOTAL								
1995	-2.7	-4.0	-3.5	-2.4	-2.7	-2.7	-3.3	-6.2
1996	-4.2	-4.1	-2.7	-5.4	-3.3	-3.2	-0.5	-4.9
1997	0.9	-1.1	0.3	-3.0	-2.4	-2.5	0.1	1.9
1998	1.5	0.2	-0.7	2.6	0.1	0.1	-2.9	-7.2
1999	1.9	3.8	4.8	0.8	0.9	1.0	1.3	4.9
2000	-0.2	-0.6	-0.8	-5.7	-4.9	-4.9	-7.5	-4.3
2001	-0.7	0.6	0.8	1.0	1.5	1.5	-0.9	-2.6
2002	2.3	2.8	1.4	3.8	3.4	3.4	NOT AVAILABLE 3/	
2003	0.5	-3.8	-3.8	0.5	0.2	0.2		
2004	0.1	0.0	-0.5	-1.8	-2.0	-1.9		
2005	-3.2	-2.3	-2.5	-3.2	-2.8	-2.8		
HAWAI'I								
1995	2.5	2.4	-2.8	3.1	-0.2	-0.3	2.8	-1.2
1996	-4.9	-11.1	-1.2	-23.4	-14.2	-14.1	-18.1	-9.1
1997	-4.7	-6.1	-6.4	-6.0	-7.6	-7.8	-4.5	-2.3
1998	8.9	1.5	-0.5	1.6	0.4	0.8	1.9	-2.3
1999	-0.8	0.5	0.7	-1.4	-1.9	-2.0	-8.2	-6.9
2000	1.2	4.4	2.5	-7.5	-8.4	-8.6	-14.9	-4.4
2001	4.1	-3.5	-3.7	-3.0	-3.7	-3.6	-2.7	-4.5
2002	3.5	2.9	0.6	3.6	3.7	3.6	NOT AVAILABLE 3/	
2003	5.7	0.7	0.6	5.9	4.7	4.8		
2004	1.4	-0.7	-1.6	2.0	1.7	1.7		
2005	0.4	-0.5	-0.2	-1.8	-2.7	-3.1		
HONOLULU								
1995	4.3	-3.1	-3.1	-6.2	-6.6	-6.8	2.8	-5.2
1996	-1.2	-1.7	-5.6	-3.5	-6.2	-5.9	-2.6	-12.3
1997	0.9	-5.1	-4.1	-2.3	-1.5	-1.6	1.6	1.4
1998	5.0	1.8	0.5	22.4	5.4	5.3	17.5	-2.5
1999 4/	10.3	22.4	22.1	10.0	11.4	11.6	NA	NA
2000	-3.5	-1.3	-0.2	-7.6	-4.5	-4.5	-10.9	-7.1
2001	-4.2	1.6	2.0	-1.8	-0.5	-0.7	-2.2	-1.4
2002	-0.3	-5.4	-5.9	-0.8	-1.7	-1.8	NOT AVAILABLE 3/	
2003	-0.8	-4.4	-3.4	-7.3	-8.1	-7.9		
2004	-1.1	4.6	-1.8	2.8	1.2	1.3		
2005	-3.9	-1.9	-2.4	-4.2	-3.2	-3.1		
KAPI'OLANI								
1995	-7.2	-5.2	-3.2	-2.3	-2.3	-2.5	-5.7	-6.6
1996	-3.8	-4.1	-3.2	0.5	2.7	2.8	8.9	-9.7
1997	-0.3	0.2	2.3	-2.5	-1.7	-1.7	-1.9	0.8
1998	1.6	-0.2	-2.9	1.4	-0.5	-0.5	-15.2	-13.5
1999	-4.1	3.7	3.7	2.0	2.1	2.2	1.9	4.6
2000	1.9	-1.2	0.3	-6.3	-4.9	-5.0	-4.1	-0.5
2001	-2.4	1.3	1.0	3.5	3.3	3.3	3.9	1.3
2002	7.0	6.1	5.4	-0.2	-0.6	-0.7	NOT AVAILABLE 3/	
2003	3.3	2.2	-1.3	3.9	1.9	2.0		
2004	5.4	-2.1	0.6	-5.7	-3.9	-3.9		
2005	-3.9	-2.8	-3.7	0.2	0.0	0.1		

TABLE 1A (cont.)

COLLEGE and YEAR	COURSES	1/ CLASSES	SEMESTER HOURS 2/	STUDENT REGIS	STUDENT SEM HRS	COURSE FTE	CONTACT HOURS	
							Student	Instr
KAUA'I								
1995	-4.2	-2.9	-2.9	-3.6	-3.0	-3.5	-8.0	-6.4
1996	-9.4	-13.9	-7.5	-8.6	-2.7	-2.7	-5.7	-10.5
1997	1.8	-4.4	2.5	-8.5	-3.0	-3.3	-7.2	-6.4
1998	-4.8	-3.7	-5.2	-13.0	-13.2	-13.0	-11.8	-10.3
1999	5.0	-0.5	-1.2	-5.2	-6.4	-6.4	-9.2	-2.6
2000	-1.8	-1.4	-2.2	-6.2	-6.8	-6.6	-7.3	-9.4
2001	-3.0	-4.3	-5.0	3.6	2.5	2.1	9.3	4.3
2002	9.4	10.6	5.8	7.0	7.5	7.7	NOT AVAILABLE 3/	
2003	-4.0	-3.7	-6.3	0.8	-1.7	-2.1		
2004	-1.8	-3.8	-3.2	-7.8	-7.4	-6.7		
2005	-1.2	-3.4	-3.1	-2.9	-3.4	-3.6		
LEEWARD								
1995	-10.8	-5.4	-4.1	-3.9	-2.9	-2.8	-10.2	-7.5
1996	-1.3	-3.6	-3.0	-5.4	-4.8	-4.8	2.4	0.8
1997	2.0	1.9	2.3	-1.9	-2.1	-2.1	4.3	8.8
1998	-1.3	-0.9	0.0	-1.4	-0.3	-0.2	-10.0	-10.1
1999	0.3	-1.5	0.0	-4.6	-4.2	-4.2	-6.8	-1.1
2000	3.0	-1.7	-3.3	-2.9	-3.5	-3.5	-7.9	-10.2
2001	1.3	0.6	1.6	2.7	3.3	3.2	-4.0	-5.9
2002	2.8	1.4	1.1	5.0	5.0	5.0	NOT AVAILABLE 3/	
2003	-1.8	-6.0	-6.4	0.7	0.9	0.8		
2004	-3.1	0.1	1.7	-2.3	-2.5	-2.4		
2005	-9.0	-4.5	-4.6	-6.8	-6.5	-6.6		
MAUI								
1995	1.7	-9.3	-6.1	-1.4	-0.3	-0.1	2.5	-10.8
1996	-5.7	8.1	6.9	1.9	4.2	4.1	6.0	13.0
1997	5.3	2.3	5.0	-2.9	-1.4	-1.4	3.3	-1.7
1998	-0.7	4.4	5.6	-2.7	0.5	0.5	3.3	7.5
1999	1.4	-1.9	2.2	-1.0	-1.3	-1.0	3.5	0.2
2000	-3.7	-1.4	-2.9	-5.5	-5.0	-5.3	-7.7	1.4
2001	3.8	3.4	2.5	-3.7	-2.8	-2.7	-8.4	-8.6
2002	-10.4	3.5	0.9	12.5	12.2	12.5	NOT AVAILABLE 3/	
2003	-1.5	-16.5	-10.1	-1.7	1.7	1.7		
2004	4.9	5.7	3.1	3.1	1.4	1.3		
2005	-2.9	-2.1	-1.0	-2.8	-0.7	-0.6		
WINDWARD								
1995	-2.1	0.5	-1.9	0.1	-0.6	-0.4	-0.2	-1.1
1996	-7.8	-5.4	-4.4	-6.4	-5.6	-5.5	-5.8	-5.4
1997	0.8	0.0	0.0	-2.0	-1.8	-1.9	-2.7	-1.7
1998	-1.5	-4.3	-3.3	1.1	0.3	0.1	0.1	-7.7
1999	2.3	2.5	1.5	0.5	0.8	0.9	2.6	5.3
2000	3.8	1.9	1.0	-3.4	-3.4	-3.2	-2.9	1.9
2001	-6.6	2.4	4.9	6.0	8.2	8.0	7.8	4.1
2002	12.5	8.8	7.2	14.4	13.7	14.0	NOT AVAILABLE 3/	
2003	0.7	-3.8	-1.6	2.5	4.1	3.8		
2004	-13.8	-7.1	-9.8	-5.0	-6.6	-6.8		
2005	4.8	2.9	4.4	-4.5	-4.1	-3.6		

1/ Excludes classes with catalog numbers 093, 193, 293 (Cooperative Education) and 099, 199, 299 (Directed Studies). Beginning Spring 2004, excludes Aerospace Studies and Military Science classes. Data have been adjusted for prior years.

2/ Excludes classes with catalog numbers 099, 199, 299 (Directed Studies).

3/ Contact hour data are no longer available from Spring 2002.

4/ Beginning in Fall 1999, includes off-campus credit classes. Percentage change for Fall 1999 is therefore not comparable with prior year.

SOURCE: Banner Operational Data Store (ODS), IRO_SOCAD and IRO_SOCEX.

TABLE 2
 AVERAGE CLASS SIZE, BY PROGRAM AND CAMPUS 1/
 UNIVERSITY OF HAWAII, COMMUNITY COLLEGES
 FALL 1995 TO FALL 2005

COLLEGE and YEAR	TOTAL	GEN & PRE-PROF INSTRUCTION	CAREER & TECH INSTRUCTION
TOTAL			
1995	23	25	19
1996	22	24	19
1997	22	24	18
1998	22	25	18
1999	22	24	18
2000	21	23	17
2001	21	23	16
2002	21	23	16
2003	22	24	17
2004	21	23	17
2005	21	23	18
HAWAII			
1995	22	24	20
1996	19	21	17
1997	19	20	18
1998	19	21	17
1999	19	21	17
2000	17	20	14
2001	17	20	14
2002	17	20	14
2003	18	20	15
2004	18	21	15
2005	18	20	15
HONOLULU			
1995	22	24	18
1996	22	24	19
1997	22	26	18
1998	27	33	19
1999	24	29	18
2000	23	27	18
2001	22	25	17
2002	22	27	17
2003	22	25	17
2004	22	25	17
2005	21	23	17
KAPI'OLANI			
1995	23	27	18
1996	24	27	20
1997	24	26	20
1998	24	26	20
1999	24	25	21
2000	23	23	21
2001	23	24	20
2002	22	23	18
2003	22	24	18
2004	21	23	18
2005	22	23	20

TABLE 2 (cont.)

COLLEGE and YEAR	TOTAL	GEN & PRE-PROF INSTRUCTION	CAREER & TECH INSTRUCTION
KAUA'I			
1995	18	19	16
1996	19	21	17
1997	18	20	16
1998	16	17	15
1999	16	18	13
2000	15	16	13
2001	16	18	13
2002	15	17	13
2003	16	17	15
2004	15	16	14
2005	16	17	14
LEEWARD			
1995	24	25	20
1996	23	24	19
1997	22	24	18
1998	22	23	18
1999	21	23	17
2000	21	23	17
2001	22	24	16
2002	22	24	16
2003	24	26	19
2004	23	25	18
2005	23	24	18
MAUI			
1995	24	26	21
1996	22	25	20
1997	21	23	19
1998	20	23	17
1999	20	22	17
2000	19	22	16
2001	18	20	15
2002	19	23	16
2003	23	27	18
2004	22	24	20
2005	22	25	19
WINDWARD			
1995	23	24	17
1996	22	24	16
1997	22	23	13
1998	23	24	17
1999	23	24	16
2000	21	23	13
2001	22	23	12
2002	23	25	12
2003	25	26	14
2004	25	26	16
2005	24	25	14

1/ The computation of average class size excludes classes with catalog numbers 093, 193, 293 (Cooperative Education) and 099, 199, 299 (Directed Studies).
Beginning Spring 2004, excludes Aerospace Studies and Military Science classes.
Data have been adjusted for prior years.

SOURCE: Banner Operational Data Store (ODS), IRO_SOCAD.

TABLE 3
 COURSE REGISTRATION SUMMARY, BY PROGRAM
 UNIVERSITY OF HAWAII, COMMUNITY COLLEGES
 FALL 2005

	COURSES		CLASSES 1/		SEMESTER HOURS 2/		STUDENT REGISTRATIONS		STUDENT SEMESTER HOURS	
	No.	V%	No.	V%	No.	V%	No.	V%	No.	V%
TOTAL.....	1,886	100.0	3,453	100.0	10,320	100.0	74,174	100.0	219,133	100.0
Lower Division	1,874	99.4	3,443	99.7	10,290	99.7	74,071	99.9	218,855	99.9
Upper Division	12	0.6	10	0.3	30	0.3	103	0.1	278	0.1
GEN & PRE-PROF INSTR	996	52.8	2,354	68.2	6,893	66.8	54,080	72.9	158,796	72.5
Lower Division	994	52.7	2,354	68.2	6,893	66.8	54,078	72.9	158,790	72.5
Upper Division	2	0.1	0	< 0.1	0	< 0.1	2	< 0.1	6	< 0.1
Humanities	524	27.8	1,286	37.2	3,921	38.0	27,543	37.1	84,153	38.4
Lower Division	523	27.7	1,286	37.2	3,921	38.0	27,542	37.1	84,150	38.4
Upper Division	1	0.1		< 0.1	0	< 0.1	1	< 0.1	3	< 0.1
Natural Sciences	300	15.9	714	20.7	1,924	18.6	16,963	22.9	46,777	21.3
Social Sciences	135	7.2	318	9.2	949	9.2	8,955	12.1	26,632	12.2
Other General Academic	37	2.0	36	1.0	99	1.0	619	0.8	1,234	0.6
Lower Division	36	1.9	36	1.0	99	1.0	618	0.8	1,231	0.6
Upper Division	1	0.1			0		1	< 0.1	3	< 0.1
CAREER & TECH INSTR	890	47.2	1,099	31.8	3,427	33.2	20,094	27.1	60,337	27.5
Lower Division	880	46.7	1,089	31.5	3,397	32.9	19,993	27.0	60,065	27.4
Upper Division	10	0.5	10	0.3	30	0.3	101	0.1	272	0.1
Business Technologies	226	12.0	357	10.3	1,026	9.9	6,856	9.2	19,264	8.8
Lower Division	219	11.6	350	10.1	1,007	9.8	6,783	9.1	19,091	8.7
Upper Division	7	0.4	7	0.2	19	0.2	73	0.1	173	0.1
Food Service Tech	43	2.3	65	1.9	204	2.0	981	1.3	2,870	1.3
Food Service & Hosp Ed	30	1.6	53	1.5	194	1.9	1,234	1.7	4,121	1.9
Health Service Tech	141	7.5	168	4.9	473	4.6	3,444	4.6	9,969	4.5
Lower Division	139	7.4	165	4.8	462	4.5	3,418	4.6	9,878	4.5
Upper Division	2	0.1	3	0.1	11	0.1	26	< 0.1	91	< 0.1
Public Service Tech	125	6.6	154	4.5	458	4.4	2,575	3.5	7,543	3.4
Other Technologies	323	17.1	302	8.7	1,056	10.2	4,736	6.4	15,887	7.2
Lower Division	322	17.1	302	8.7	1,056	10.2	4,734	6.4	15,879	7.2
Upper Division	1	0.1		< 0.1	0	< 0.1	2	< 0.1	8	< 0.1
Other Occup/Voc	2	0.1	0	< 0.1	17	0.2	268	0.4	684	0.3

1/ Excludes classes with catalog numbers 093,193,293 (Cooperative Education); 099, 199, 299 (Directed Studies); and Aerospace and Military Science classes.

2/ Excludes courses with catalog numbers 099, 199, 299 (Directed Studies).

Note: Semester hours and student semester hours reported here may differ slightly from data source due to rounding.

SOURCE: Banner Operational Data Store (ODS), IRO_SOCAD and IRO_SOCEX.

TABLE 4
NUMBER OF CLASSES AND AVERAGE CLASS SIZE 1/
UNIVERSITY OF HAWAII, COMMUNITY COLLEGES
FALL 2001 TO FALL 2005

	FALL 2001			FALL 2002			FALL 2003			FALL 2004			FALL 2005		
	Classes No.	% Chg	Avg Size	Classes No.	% Chg	Avg Size	Classes No.	% Chg	Avg Size	Classes No.	% Chg	Avg Size	Classes No.	% Chg	Avg Size
TOTAL.....	3,577	0.6	21	3,676	2.8	21	3,536	-3.8	22	3,536		21	3,453	-2.3	21
Lower Division	3,577	0.6	21	3,676	2.8	21	3,536	-3.8	22	3,535	< .1	21	3,443	< .1	21
Upper Division										1		11	10	900.0	10
GEN & PRE-PROF INSTR	2,290	0.5	23	2,382	4.0	23	2,320	-2.6	24	2,366	2.0	23	2,354	-0.5	23
Lower Division	2,290	0.5	23	2,382	4.0	23	2,320	-2.6	24	2,366	2.0	23	2,354	-0.5	23
Upper Division															
Humanities	1,279	0.5	22	1,330	4.0	22	1,276	-4.1	22	1,295	1.5	22	1,286	-0.7	21
Lower Division	1,279	0.5	22	1,330	4.0	22	1,276	-4.1	22	1,295	1.5	22	1,286	-0.7	21
Upper Division															
Natural Sciences	659	1.5	25	685	3.9	26	679	-0.9	26	696	2.5	25	714	2.6	24
Social Sciences	312	1.0	27	324	3.8	27	327	0.9	29	333	1.8	28	318	-4.5	28
Other General Academic	40	-16.7	14	43	7.5	14	38	-11.6	16	42	10.5	15	36	-14.3	16
Lower Division													36		16
Upper Division															
CAREER & TECH INSTR	1,287	0.9	16	1,294	0.5	16	1,216	-6.0	17	1,170	-3.8	17	1,099	-6.1	18
Lower Division	1,287	0.9	16	1,294	0.5	16	1,216	-6.0	17	1,169	-3.9	17	1,089	-6.8	18
Upper Division										1		11	10	900.0	10
Business Technologies	484	-0.2	17	474	-2.1	17	410	-13.5	19	401	-2.2	18	357	-11.0	19
Lower Division													350		19
Upper Division													7		10
Food Service Tech	57	-6.6	15	56	-1.8	16	62	10.7	17	66	6.5	16	65	-1.5	15
Food Service & Hosp Ed	61	8.9	24	60	-1.6	22	51	-15.0	24	51		22	53	3.9	23
Health Service Tech	201	0.5	15	211	5.0	14	213	0.9	16	197	-7.5	18	168	-14.7	20
Lower Division													165		21
Upper Division													3		9
Public Service Tech	148	-3.3	17	152	2.7	18	159	4.6	17	145	-8.8	17	154	6.2	16
Other Technologies	336	5.0	14	341	1.5	14	321	-5.9	15	310	-3.4	15	302	-2.6	15
Lower Division	336	5.0	14	341	1.5	14	321	-5.9	15	309	-3.7	15	302	-2.3	15
Upper Division										1		11			
Other Occup/Voc		-100.0												-100.0	

1/ The number of classes and average class size exclude courses with catalog numbers 093, 193, 293 (Cooperative Education) and 099, 199, 299 (Directed Studies). Beginning Spring 2004, excludes Aerospace Studies and Military Science classes. Data have been adjusted for prior years.

SOURCE: Banner Operational Data Store (ODS), IRO_SOCAD.

TABLE 5
 STUDENT SEMESTER HOURS (SSH) AND COURSE FTE
 UNIVERSITY OF HAWAII, COMMUNITY COLLEGES
 FALL 2001 TO FALL 2005

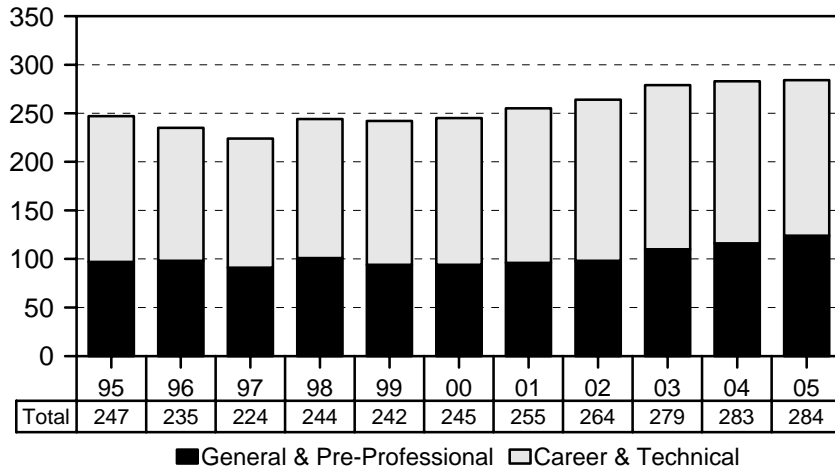
	FALL 2001			FALL 2002			FALL 2003			FALL 2004			FALL 2005		
	No.	SSH % Chg	COURSE FTE	No.	SSH % Chg	COURSE FTE	No.	SSH % Chg	COURSE FTE	No.	SSH % Chg	COURSE FTE	No.	SSH % Chg	COURSE FTE
TOTAL	222,135	1.5	14,798	229,683	3.4	15,305	230,090	0.2	15,331	225,543	-2.0	15,033	219,133	-2.8	14,609
Lower Division	222,135	1.5	14,798	229,683	3.4	15,305	230,090	0.2	15,331	225,490	-2.0	15,029	218,855	-2.9	14,590
Upper Division										53		4	278	424.5	19
GEN & PRE-PROF INSTR.....	157,107	2.6	10,470	164,987	5.0	10,996	165,470	0.3	11,027	163,355	-1.3	10,889	158,796	-2.8	10,586
Lower Division	157,107	2.6	10,470	164,987	5.0	10,996	165,470	0.3	11,027	163,346	-1.3	10,888	158,790	-2.8	10,586
Upper Division										9		1	6	-33.3	
Humanities	84,522	2.3	5,635	87,732	3.8	5,843	86,937	-0.9	5,792	86,317	-0.7	5,754	84,153	-2.5	5,609
Lower Division	84,522	2.3	5,635	87,732	3.8	5,843	86,937	-0.9	5,792	86,308	-0.7	5,753	84,150	-2.5	5,609
Upper Division										9		1	3	-66.7	
Natural Sciences	45,644	2.3	3,040	49,137	7.7	3,278	49,011	-0.3	3,270	47,611	-2.9	3,175	46,777	-1.8	3,116
Social Sciences	25,564	5.7	1,706	26,702	4.5	1,777	28,260	5.8	1,882	27,992	-0.9	1,867	26,632	-4.9	1,779
Other General Academic	1,377	-17.0	89	1,416	2.8	98	1,262	-10.9	83	1,435	13.7	93	1,234	-14.0	82
Lower Division													1,231		82
Upper Division													3		
CAREER & TECH INSTR.....	65,028	-1.1	4,328	64,696	-0.5	4,309	64,620	-0.1	4,304	62,188	-3.8	4,144	60,337	-3.0	4,023
Lower Division	65,028	-1.1	4,328	64,696	-0.5	4,309	64,620	-0.1	4,304	62,144	-3.8	4,141	60,065	-3.3	4,004
Upper Division										44		3	272	518.2	19
Business Technologies	23,111	-6.3	1,539	21,903	-5.2	1,459	21,742	-0.7	1,448	20,246	-6.9	1,351	19,264	-4.9	1,284
Lower Division													19,091		1,272
Upper Division													173		12
Food Service Tech	2,834	-11.2	189	2,823	-0.4	188	3,205	13.5	214	3,114	-2.8	208	2,870	-7.8	191
Food Service & Hosp Ed	5,106	-2.6	340	4,515	-11.6	301	4,303	-4.7	287	3,914	-9.0	261	4,121	5.3	275
Health Service Tech	8,621	3.0	575	9,322	8.1	622	9,286	-0.4	618	10,433	12.4	694	9,969	-4.5	663
Lower Division													9,878		657
Upper Division													91		6
Public Service Tech	7,709	8.9	512	8,287	7.5	552	8,515	2.8	568	7,505	-11.9	500	7,543	0.5	502
Other Technologies	17,120	2.0	1,138	16,938	-1.1	1,127	16,868	-0.4	1,123	16,351	-3.1	1,088	15,887	-2.8	1,063
Lower Division	17,120	2.0	1,138	16,938	-1.1	1,127	16,868	-0.4	1,123	16,307	-3.3	1,085	15,879	-2.6	1,062
Upper Division										44		3	8	-81.8	1
Other Occup/Voc	527	34.8	35	908	72.3	60	701	-22.8	46	625	-10.8	42	684	9.4	45

Note: Student semester hours reported here may differ slightly from data source due to rounding.

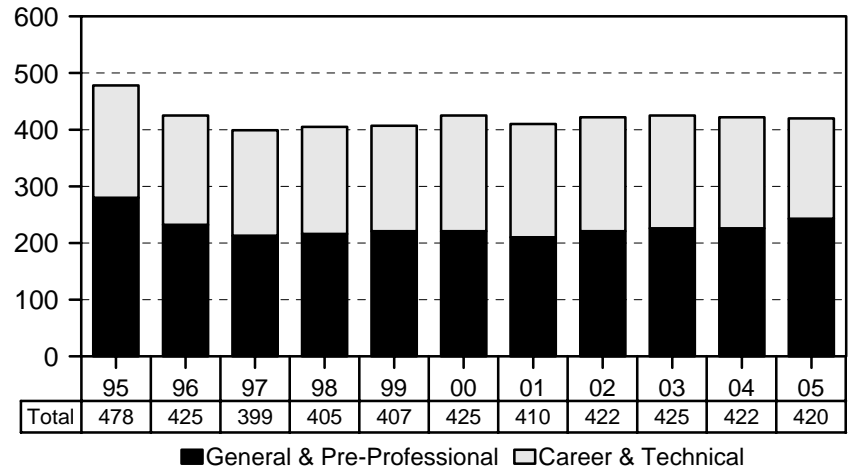
SOURCE: Banner Operational Data Store (ODS), IRO_SOCAD.

Hawai'i Community College, Fall Semesters 1995 - 2005

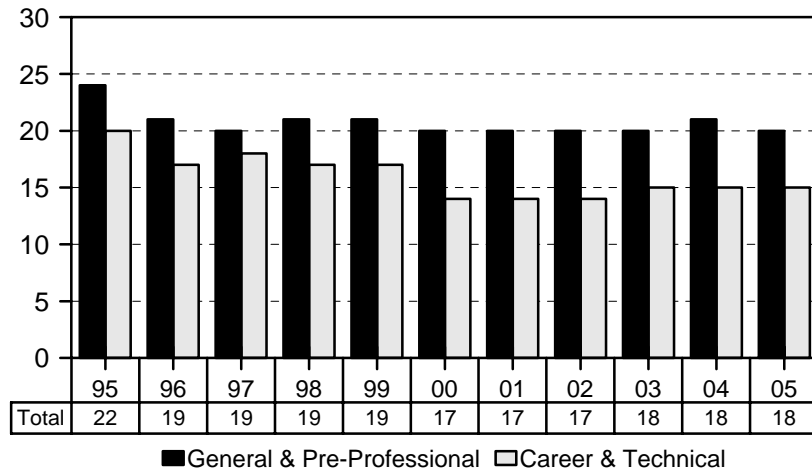
Number of Courses



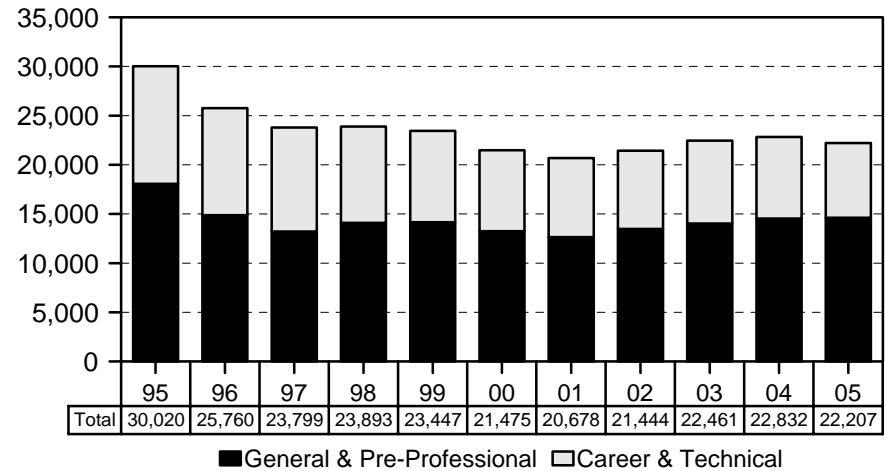
Number of Classes



Average Class Size



Student Semester Hours



APPENDIX A-1
 COURSE REGISTRATION AND AVERAGE CLASS SIZE SUMMARY, BY COURSE OFFERING
 HAWAII COMMUNITY COLLEGE
 FALL 2005

COURSE OFFERING	COURSES	CLASSES 1/		SEM HOURS 2/	STUDENT REGIS	STUDENT SEM HRS	COURSE FTE
		No.	Avg Size				
TOTAL	284	420	18	1,234	7,719	22,207	1,476
GEN & PRE-PROF INSTR	124	243	20	718	4,967	14,603	970
Humanities	61	140	19	435	2,724	8,409	559
Art	10	14	15	42	215	645	43
Asian Studies	1	1	31	3	31	93	6
Dance	1	1	22	3	22	66	4
English	11	58	19	174	1,112	3,336	222
English as a Second Language	6	6	12	27	71	335	22
Foreign Languages	3	7	19	28	135	540	36
Hawaiian	2	5	21	20	107	428	29
Japanese	1	2	14	8	28	112	7
Hawaiian Studies	13	21	20	62	410	1,210	81
History	7	15	23	45	341	1,023	68
Linguistics	1	1	12	3	12	36	2
Philosophy	4	4	24	12	95	285	19
Religion	2	2	30	6	59	177	12
Speech Communication.....	2	10	22	30	221	663	44
Natural Sciences	37	65	21	173	1,396	3,687	244
Biological Sciences	12	18	19	38	334	734	48
Biology	6	12	20	26	239	541	36
Botany	4	4	14	8	56	112	7
Microbiology	2	2	20	4	39	81	5
Chemistry	4	4	20	8	79	183	12
Mathematics	15	34	23	102	781	2,208	147
Physical Sciences	2	3	21	9	62	186	12
Astronomy	1	2	25	6	50	150	10
Physics	1	1	12	3	12	36	2
Science	4	6	23	16	140	376	25
Social Sciences	22	34	23	100	791	2,353	157
Anthropology	2	4	27	12	106	318	21
Economics	1	1	28	3	28	84	6
Family Resources	1	2	31	6	62	186	12
Geography	5	6	18	16	105	295	20
Political Science	1	1	15	3	15	45	3
Psychology	3	7	26	21	181	543	36
Social Science	3	3	18	9	54	162	11
Sociology	5	9	24	27	215	645	43
Women's Studies	1	1	25	3	25	75	5
Other General Academic	4	4	14	10	56	154	10
Interdisciplinary Studies	2	2	15	6	29	87	6
Learning Skills	1	1	7	1	7	7	
University	1	1	20	3	20	60	4

APPENDIX A-2
NUMBER OF CLASSES AND AVERAGE CLASS SIZE 1/
HAWAI'I COMMUNITY COLLEGE
FALL 2001 TO FALL 2005

	FALL 2001			FALL 2002			FALL 2003			FALL 2004			FALL 2005		
	Classes No.	% Chg	Avg Size	Classes No.	% Chg	Avg Size	Classes No.	% Chg	Avg Size	Classes No.	% Chg	Avg Size	Classes No.	% Chg	Avg Size
TOTAL	410	-3.5	17	422	2.9	17	425	0.7	18	422	-0.7	18	420	-0.5	18
GEN & PRE-PROF INSTR	210	-5.0	20	221	5.2	20	226	2.3	20	226	0.0	21	243	7.5	20
Humanities	127	1.6	19	128	0.8	19	133	3.9	19	127	-4.5	21	140	10.2	19
Natural Sciences	55	-9.8	20	57	3.6	21	54	-5.3	22	61	13.0	21	65	6.6	21
Social Sciences	26	-23.5	23	34	30.8	21	35	2.9	22	35	0.0	22	34	-2.9	23
Other General Academic	2	100.0	19	2	0.0	20	4	100.0	13	3	-25.0	20	4	33.3	14
CAREER & TECH INSTR	200	-2.0	14	201	0.5	14	199	-1.0	15	196	-1.5	15	177	-9.7	15
Business Technologies	90	4.7	14	86	-4.4	13	73	-15.1	16	78	6.8	13	61	-21.8	14
Food Service Tech	13	8.3	19	13	0.0	14	13	0.0	18	13	0.0	18	13	0.0	14
Health Service Tech	12	-36.8	18	11	-8.3	22	15	36.4	21	16	6.7	18	11	-31.3	24
Public Service Tech	21	-12.5	17	21	0.0	18	24	14.3	17	24	0.0	19	21	-12.5	19
Other Technologies	64	1.6	11	70	9.4	13	74	5.7	13	65	-12.2	15	71	9.2	14

1/ Number of classes and average class size exclude courses with catalog numbers 093, 193, 293 (Cooperative Education) and 099, 199, 299 (Directed Studies).
Beginning Spring 2004, excludes Aerospace Studies and Military Science classes.

SOURCE: Banner Operational Data Store (ODS), IRO_SOCAD.

APPENDIX A-3
 STUDENT SEMESTER HOURS (SSH) AND COURSE FTE
 HAWAI'I COMMUNITY COLLEGE
 FALL 2001 TO FALL 2005

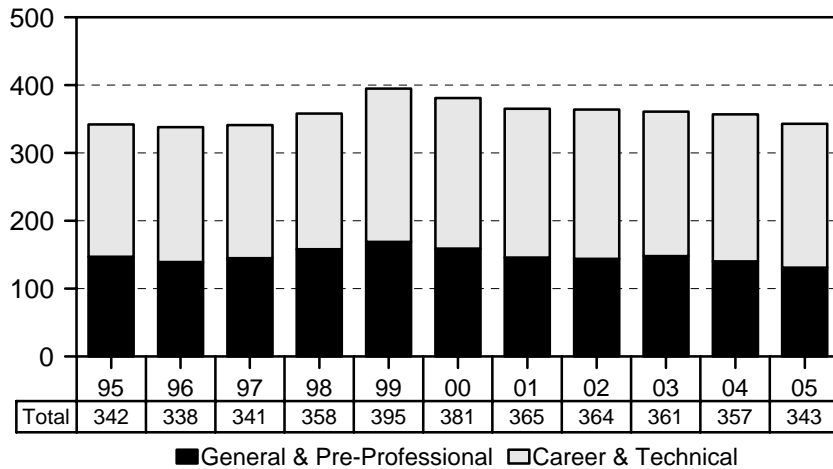
	FALL 2001			FALL 2002			FALL 2003			FALL 2004			FALL 2005		
	No.	SSH % Chg	COURSE FTE	No.	SSH % Chg	COURSE FTE	No.	SSH % Chg	COURSE FTE	No.	SSH % Chg	COURSE FTE	No.	SSH % Chg	COURSE FTE
TOTAL	20,678	-3.7	1,378	21,444	3.7	1,428	22,461	4.7	1,497	22,832	1.7	1,523	22,207	-2.7	1,476
GEN & PRE-PROF INSTR	12,651	-4.5	845	13,470	6.5	896	14,039	4.2	936	14,529	3.5	968	14,603	0.5	970
Humanities	7,375	-5.7	494	7,668	4.0	510	8,101	5.6	539	8,174	0.9	544	8,409	2.9	559
Natural Sciences	3,356	-1.8	224	3,575	6.5	238	3,582	0.2	240	3,863	7.8	258	3,687	-4.6	244
Social Sciences	1,809	-7.0	120	2,110	16.6	140	2,265	7.3	151	2,336	3.1	156	2,353	0.7	157
Other General Academic	111	85.0	7	117	5.4	8	91	-22.2	6	156	71.4	10	154	-1.3	10
CAREER & TECH INSTR	8,027	-2.5	533	7,974	-0.7	532	8,422	5.6	561	8,303	-1.4	555	7,604	-8.4	506
Business Technologies	2,756	-8.3	182	2,396	-13.1	160	2,447	2.1	163	2,154	-12.0	144	1,917	-11.0	128
Food Service Tech	889	7.5	59	696	-21.7	46	790	13.5	53	822	4.1	55	652	-20.7	43
Health Service Tech	789	3.1	52	868	10.0	58	842	-3.0	56	783	-7.0	52	798	1.9	53
Public Service Tech	1,356	6.5	90	1,281	-5.5	86	1,309	2.2	88	1,452	10.9	97	1,293	-11.0	86
Other Technologies	2,237	-5.1	150	2,733	22.2	182	3,034	11.0	201	3,092	1.9	207	2,944	-4.8	196

Note: Student semester hours reported here may differ slightly from data source due to rounding.

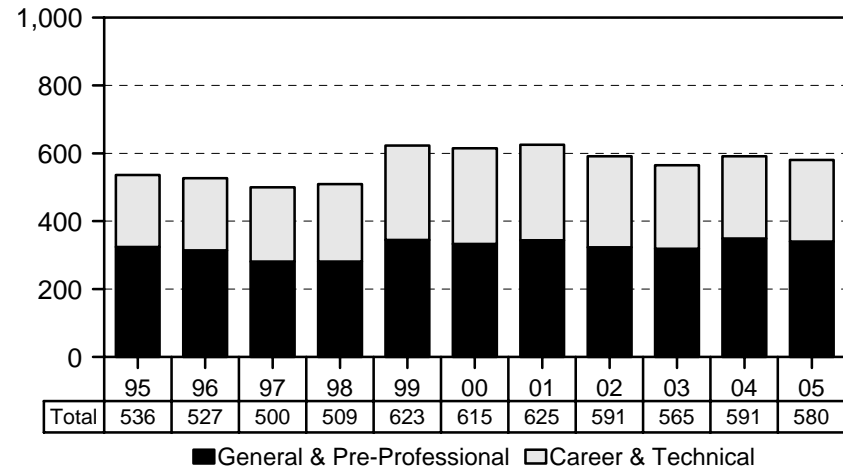
SOURCE: Banner Operational Data Store (ODS), IRO_SOCAD.

Honolulu Community College, Fall Semesters 1995 - 2005

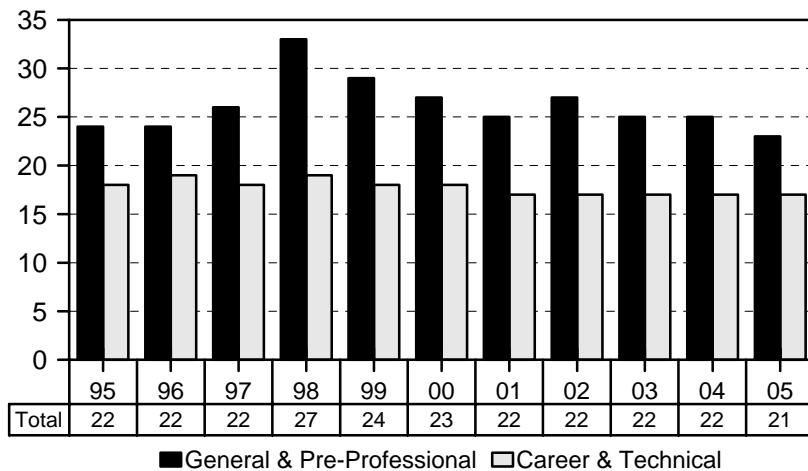
Number of Courses



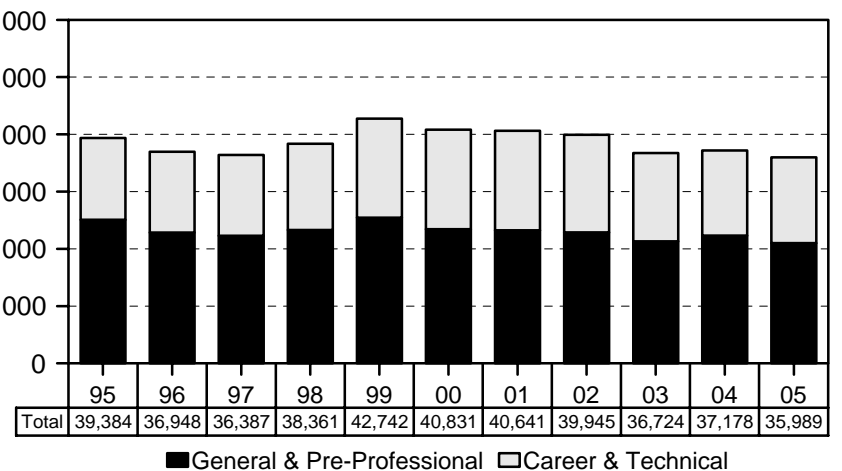
Number of Classes



Average Class Size



Student Semester Hours



Note: Beginning Fall 1999, includes classes offered through the off-campus credit program.

APPENDIX B-1 (cont.)

COURSE OFFERING	COURSES	CLASSES 1/ No. Avg Size	SEM HOURS 2/	STUDENT REGIS	STUDENT SEM HRS	COURSE FTE
Aerospace Studies	2		4	14	22	1
Learning Skills	1	1 29	3	29	87	6
Military Science & Leadership.....	4		4	11	17	1
Lower Division	3		4	10	14	1
Upper Division	1			1	3	
CAREER & TECH INSTR	212	240 17	861	4,506	14,977	999
Lower Division	211	240 17	861	4,504	14,969	998
Upper Division	1			2	8	1
Business Technologies	6	22 21	66	451	1,353	90
Accounting	2	2 11	6	22	66	4
Information & Computer Science .	4	20 21	60	429	1,287	86
Health Service Tech	2	4 30	12	121	363	24
Food Sci & Human Nutrition	1	3 31	9	94	282	19
Pharmacology.....	1	1 27	3	27	81	5
Public Service Tech	55	72 16	207	1,231	3,542	235
Administration of Justice	10	10 19	31	188	563	38
Fire & Envir Emergency Resp	13	14 19	47	281	875	58
Human Services	22	35 13	88	499	1,309	87
Education	19	32 13	80	438	1,168	78
Social Services	3	3 15	8	61	141	9
Industrial Education	2	6 25	18	148	445	29
IED-Drafting	1	6 25	18	147	441	29
IED-Wood Construction	1			1	4	
Occupational Environ Safety Mgt .	8	7 16	23	115	350	23
Other Technologies	148	142 17	561	2,437	9,039	605
Lower Division.....	147	142 17	561	2,435	9,031	604
Upper Division.....	1			2	8	1
Aeronautics	9	9 5	59	45	303	20
Arch, Engr and CAD Tech.....	11	10 23	28	231	663	44
Auto Body Rep & Paint	11	11 17	24	192	398	27
Auto Mechanics Tech	11	10 15	63	167	909	61
Aviation	8	8 14	25	109	368	25
Blueprint Reading	1	3 28	9	85	255	17
Boat Maintenance & Repair	10	9 9	24	85	225	15
Carpentry	3	3 17	26	51	435	29
Commerical Art	14	14 12	54	176	628	42
Computing, Elect & Networking....	18	13 17	56	258	961	65
Lower Division	17	13 17	56	256	953	64
Upper Division	1			2	8	1
Cosmetology	10	9 19	53	181	1,119	75
Diesel Mechanics Tech	5	5 20	12	100	240	16
Electrical Installation & Main	5	4 19	21	78	386	26
Fashion Tech	10	11 18	36	198	629	42
Refrigeration & Air Conditioning ...	5	5 23	25	117	585	39
Sheet Metal & Plastics	4	4 22	13	88	286	19
Welding	13	14 19	33	276	649	43
Other Occup/Vocational	1		15	266	680	45
Work Cycle	1		15	266	680	45

1/ Excludes classes with catalog numbers 093, 193, 293 (Cooperative Education) and 099, 199, 299 (Directed Studies). Also excludes Aerospace Studies and Military Science classes.

2/ Excludes courses with catalog numbers 099, 199, 299 (Directed Studies).

Note: Semester hours and student semester hours reported here may differ slightly from data source due to rounding.

SOURCE: Banner Operational Data Store (ODS), IRO_SOCAD and IRO_SOCEX.

APPENDIX B-2
NUMBER OF CLASSES AND AVERAGE CLASS SIZE 1/
HONOLULU COMMUNITY COLLEGE
FALL 2001 TO FALL 2005

	FALL 2001			FALL 2002			FALL 2003			FALL 2004			FALL 2005		
	Classes No.	% Chg	Avg Size	Classes No.	% Chg	Avg Size	Classes No.	% Chg	Avg Size	Classes No.	% Chg	Avg Size	Classes No.	% Chg	Avg Size
TOTAL	625	1.6	22	591	-5.4	22	565	-4.4	22	591	4.6	22	580	-1.9	21
Lower Division	625	1.6	22	591	-5.4	22	565	-4.4	22	590	4.4	22	580	-1.7	21
Upper Division										1		11	0	-100.0	
GEN & PRE-PROF INSTR	344	93.4	25	323	-49.8	27	319	-1.2	25	349	9.4	25	340	-2.6	23
Humanities	159	1.9	24	158	-0.6	24	148	-6.3	24	166	12.2	23	157	-5.4	23
Natural Sciences	123	4.2	29	117	-4.9	31	119	1.7	28	132	10.9	25	134	1.5	24
Social Sciences	58	5.5	22	47	-19.0	25	51	8.5	23	50	-2.0	27	48	-4.0	24
Other General Academic	4	0.0	15	1	-75.0	29	1	0.0	30	1	0.0	31	1	0.0	29
CAREER & TECH INSTR	281	-0.4	17	268	-4.6	17	246	-8.2	17	242	-1.6	17	240	-0.8	17
Lower Division	281	-0.4	17	268	-4.6	17	246	-8.2	17	241	-2.0	17	240	-0.4	17
Upper Division										1		11		-100.0	
Business Technologies	38	-5.0	18	28	-26.3	20	25	-10.7	20	22	-12.0	21	22	0.0	21
Health Service Tech	4	33.3	30	3	-25.0	31	3	0.0	32	4	33.3	29	4	0.0	30
Public Service Tech	76	-5.0	16	80	5.3	18	74	-7.5	16	66	-10.8	17	72	9.1	16
Other Technologies	163	3.2	16	157	-3.7	16	144	-8.3	17	150	4.2	16	142	-5.3	17
Lower Division	163	3.2	16	157	-3.7	16	144	-8.3	17	149	3.5	16	142	-4.7	17
Upper Division										1		11		-100.0	

1/ Number of classes and average class size exclude courses with catalog numbers 093, 193, 293 (Cooperative Education) and 099, 199, 299 (Directed Studies).
Beginning Spring 2004, excludes Aerospace Studies and Military Science classes. Data have been adjusted for prior years.

SOURCE: Banner Operational Data Store (ODS), IRO_SOCAD.

APPENDIX B-3
STUDENT SEMESTER HOURS (SSH) AND COURSE FTE
HONOLULU COMMUNITY COLLEGE
FALL 2001 TO FALL 2005

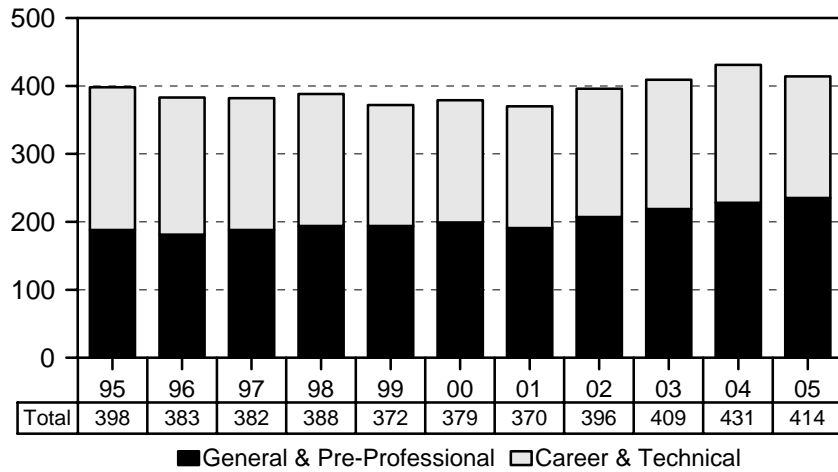
	FALL 2001			FALL 2002			FALL 2003			FALL 2004			FALL 2005		
	No.	SSH % Chg	COURSE FTE	No.	SSH % Chg	COURSE FTE	No.	SSH % Chg	COURSE FTE	No.	SSH % Chg	COURSE FTE	No.	SSH % Chg	COURSE FTE
TOTAL	40,641	-0.5	2,704	39,945	-1.7	2,656	36,724	-8.1	2,446	37,178	1.2	2,477	35,989	-3.2	2,401
Lower Division	40,641	-0.5	2,704	39,945	-1.7	2,656	36,724	-8.1	2,446	37,125	1.1	2,473	35,975	-3.1	2,400
Upper Division										53		4	14	-73.6	1
GEN & PRE-PROF INSTR	23,240	-0.8	1,548	22,892	-1.5	1,522	21,301	-7.0	1,419	22,315	-2.5	1,489	21,012	-5.8	1,402
Lower Division	23,240	-0.8	1,548	22,892	-1.5	1,522	21,301	-7.0	1,419	22,306	4.7	1,488	21,006	-5.8	1,402
Upper Division										9		1	6	-33.3	
Humanities	10,799	-1.7	719	10,711	-0.8	712	10,039	-6.3	669	10,446	4.1	698	10,061	-3.7	670
Lower Division	10,799	-1.7	719	10,711	-0.8	712	10,039	-6.3	669	10,437	4.0	697	10,058	-3.6	670
Upper Division										9		1	3	-66.7	
Natural Sciences	8,490	1.7	567	8,531	0.5	568	7,671	-10.1	512	7,765	1.2	518	7,378	-5.0	493
Social Sciences	3,749	-5.1	249	3,533	-5.8	234	3,472	-1.7	230	3,974	14.5	265	3,447	-13.3	231
Other General Academic	202	38.4	13	117	-42.1	8	119	1.7	8	130	9.2	8	126	-3.1	8
Lower Division													123		8
Upper Division													3		
CAREER & TECH INSTR	17,401		1,156	17,053	-2.0	1,134	15,423	-9.6	1,027	14,863	-3.6	988	14,977	0.8	999
Lower Division	17,401		1,156	17,053	-2.0	1,134	15,423	-9.6	1,027	14,819	-3.9	985	14,969	1.0	998
Upper Division										44		3	8	-81.8	1
Business Technologies	2,096	-10.4	140	1,750	-16.5	116	1,515	-13.4	101	1,372	-9.4	91	1,353	-1.4	90
Health Service Tech	354	32.6	23	276	-22.0	18	291	5.4	19	351	20.6	23	363	3.4	24
Public Service Tech	3,705	1.8	246	4,175	12.7	278	3,557	-14.8	237	3,297	-7.3	219	3,542	7.4	235
Other Technologies	10,737	-0.4	713	9,946	-7.4	662	9,366	-5.8	624	9,233	-1.4	614	9,039	-2.1	605
Lower Division	10,737	-0.4	713	9,946	-7.4	662	9,366	-5.8	624	9,189	-1.9	611	9,031	-1.7	604
Upper Division										44		3	8	-81.8	1
Other Occup/Voc	509	33.9	34	906	78.0	60	694	-23.4	46	610	-12.1	41	680	11.5	45

Note: Student semester hours reported here may differ slightly from data source due to rounding.

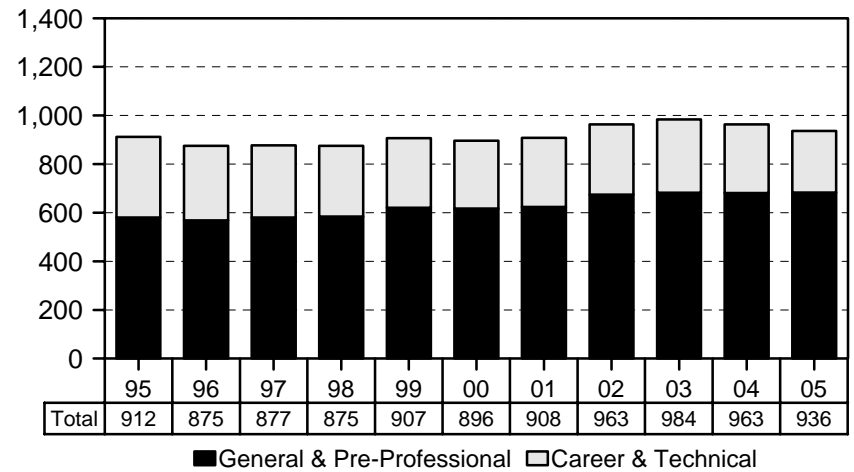
SOURCE: Banner Operational Data Store (ODS), IRO_SOCAD.

Kapi'olani Community College, Fall Semesters 1995 - 2005

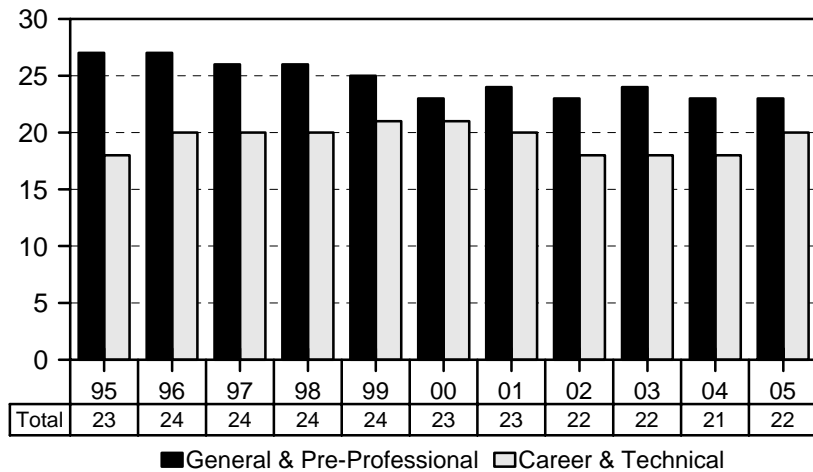
Number of Courses



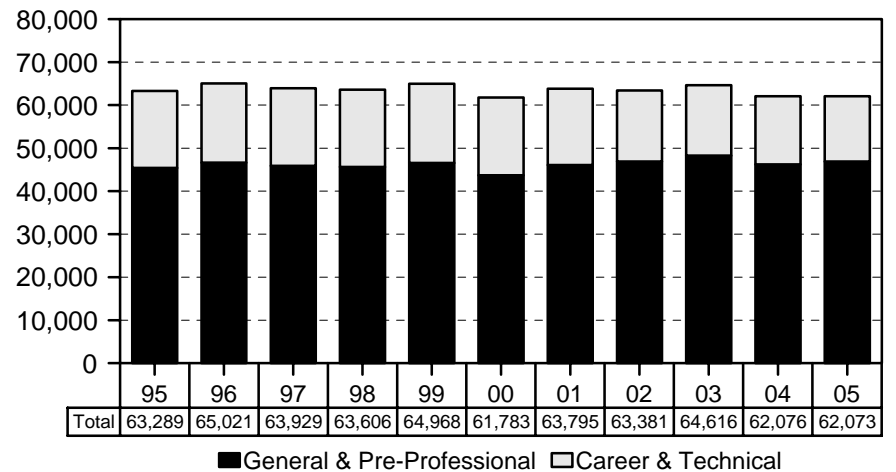
Number of Classes



Average Class Size



Student Semester Hours



APPENDIX C-1
 COURSE REGISTRATION AND AVERAGE CLASS SIZE SUMMARY, BY COURSE OFFERING
 KAPI'OLANI COMMUNITY COLLEGE
 FALL 2005

COURSE OFFERING	COURSES	CLASSES 1/		SEM HOURS 2/	STUDENT REGIS	STUDENT SEM HRS	COURSE FTE
		No.	Avg Size				
TOTAL	414	936	22	2,806	20,577	62,073	4,142
Lower Division	412	933	22	2,795	20,551	61,982	4,136
Upper Division	2	3	9	11	26	91	6
GEN & PRE-PROF INSTR	235	683	23	2,040	15,539	46,893	3,129
Humanities	145	384	21	1,230	7,979	25,808	1,722
Art	32	63	17	191	1,107	3,319	221
Asian Studies	1	1	30	3	30	90	6
Communications	1	1	23	3	23	69	5
Dance	5	6	17	18	104	312	21
English	15	96	20	288	1,908	5,724	382
English as a Second Language	1	5	19	15	93	279	19
English for Speakers of Other Lang ..	5	17	22	95	371	2,021	135
Foreign Languages	32	70	19	282	1,315	5,254	349
American Sign Language	2	7	21	28	147	588	39
Chinese	3	4	18	16	71	284	19
East Asian Language & Lit	2	2	17	6	34	102	7
Filipino.....	1	1	24	4	24	96	6
French	2	2	19	7	38	137	9
Hawaiian	4	11	17	43	184	727	48
Japanese	9	25	20	108	507	2,115	141
Korean	5	6	16	25	97	396	26
Spanish	4	12	18	45	213	809	54
Hawaiian Studies	3	19	31	57	598	1,794	120
History	7	25	30	75	739	2,217	148
Interpretation & Translation	4	4	10	8	39	78	5
Journalism	4	4	11	6	44	128	9
Lang & Lit Europe & Americas	1	1	12	3	12	36	2
Linguistics	1	3	19	9	56	168	11
Music	19	27	16	51	420	959	64
Philosophy	5	9	34	27	303	909	61
Religion	3	8	30	24	238	714	48
Speech	4	22	24	66	528	1,584	106
Theatre	2	3	17	9	51	153	10
Natural Sciences	60	218	24	557	5,328	14,476	966
Biochemistry	1	1	29	3	29	87	6
Biological Sciences	23	92	24	196	2,191	5,218	348
Biology	9	26	23	60	603	1,543	103
Botany	5	5	22	11	109	277	18
Microbiology	5	11	20	27	216	579	39
Zoology	4	50	25	98	1,263	2,819	188
Chemistry	7	28	25	67	686	1,750	117
Civil Engineering	1	1	14	3	14	42	3
Electrical Engineering	1	1	14	4	14	56	4
Mathematics	13	77	27	241	2,048	6,416	428
Oceanography	1	2	24	6	48	144	10
Physical Sciences	12	15	18	34	271	682	45
Astronomy	1	2	21	6	42	126	8
Geology-Geophysics	2	4	21	8	82	190	13
Physics	9	9	16	20	147	366	24
Physiology	1	1	27	3	27	81	5
Social Sciences	26	75	29	221	2,176	6,438	430
American Studies	1	2	8	6	15	45	3
Anthropology	2	6	34	18	204	612	41
Economics	3	10	26	30	262	786	52
Family Resources	1	11	30	33	334	1,002	67
Geography	5	13	30	35	393	1,089	73

APPENDIX C-1 (cont.)

COURSE OFFERING	COURSES	CLASSES 1/		SEM HOURS 2/	STUDENT REGIS	STUDENT SEM HRS	COURSE FTE
		No.	Avg Size				
Political Science	3	4	22	12	86	258	17
Psychology	5	18	31	54	560	1,680	112
Social Sciences	1	1	34	3	34	102	7
Sociology	5	10	29	30	288	864	58
Other General Academic	4	6	9	32	56	171	11
Interdisciplinary Studies	1	2	15	6	30	90	6
Learning Skills	3	4	7	26	26	81	5
CAREER & TECH INSTR	179	253	20	766	5,038	15,180	1,013
Lower Division	177	250	20	755	5,012	15,089	1,007
Upper Division	2	3	9	11	26	91	6
Business Technologies	43	70	23	210	1,599	4,762	318
Accounting	9	17	23	51	395	1,185	79
Business	2	5	26	15	131	393	26
Business Law	1	5	33	15	164	492	33
eBusiness	4	4	14	12	56	168	11
Entrepreneurship	3	3	23	9	68	204	14
Information & Computer Science	7	20	24	57	476	1,393	93
Information Technology	11	10	16	33	171	513	34
Management	2	2	27	6	53	159	11
Marketing	4	4	21	12	85	255	17
Food Service & Hospitality Ed	30	53	23	194	1,234	4,121	275
Food Service & Hospitality Ed	30	53	23	194	1,234	4,121	275
Health Service Tech	90	113	17	310	1,909	5,417	361
Lower Division.....	88	110	17	299	1,883	5,326	355
Upper Division.....	2	3	9	11	26	91	6
Dental Assisting	8	9	12	17	104	208	14
Emergency Medical Tech	2	2	14	20	28	292	19
Exercise and Sports Sci	5	7	17	16	121	319	21
Health	14	20	28	36	564	897	60
Medical Assisting	13	13	10	25	127	259	17
Medical Laboratory Tech	6	6	12	15	70	166	11
Mobile Intensive Care Tech	2	2	18	8	36	144	10
Nursing	11	13	24	67	315	1,547	103
Occupational Therapy Asst	7	8	9	20	72	192	13
Pharmacology	1	2	51	6	102	306	20
Physical Therapy Asst	7	7	10	12	73	114	8
Radiologic Technology	8	16	12	38	199	630	42
Respiratory Care	6	8	12	30	98	343	23
Lower Division	4	5	14	19	72	252	17
Upper Division	2	3	9	11	26	91	6
Public Service Tech	16	17	17	52	296	880	59
Human Services	16	17	17	52	296	880	59
Deaf Studies	2	2	18	6	36	108	7
Education	3	3	7	7	21	55	4
Law	11	12	19	39	239	717	48

1/ Excludes classes with catalog numbers 093, 193, 293 (Cooperative Education) and 099, 199, 299 (Directed Studies). Also excludes Aerospace Studies and Military Science classes.

2/ Excludes courses with catalog numbers 099, 199, 299 (Directed Studies).

Note: Semester hours and student semester hours reported here may differ slightly from data source due to rounding.

SOURCE: Banner Operational Data Store (ODS), IRO_SOCAD and IRO_SOCEX.

APPENDIX C-2
NUMBER OF CLASSES AND AVERAGE CLASS SIZE 1/
KAPI'OLANI COMMUNITY COLLEGE
FALL 2001 TO FALL 2005

	FALL 2001			FALL 2002			FALL 2003			FALL 2004			FALL 2005		
	Classes No.	% Chg	Avg Size	Classes No.	% Chg	Avg Size	Classes No.	% Chg	Avg Size	Classes No.	% Chg	Avg Size	Classes No.	% Chg	Avg Size
TOTAL	908	1.3	23	963	6.1	22	984	2.2	22	963	-2.1	21	936	-2.8	22
Lower Division													933		22
Upper Division													3		9
GEN & PRE-PROF INSTR	624	1.1	24	674	8.0	23	682	1.2	24	681	-0.1	23	683	0.3	23
Humanities	366	2.2	22	386	5.5	21	386	0.0	21	384	-0.5	21	384	0.0	21
Natural Sciences	190	1.6	26	208	9.5	26	214	2.9	26	215	0.5	25	218	1.4	24
Social Sciences	64	-1.5	31	72	12.5	28	75	4.2	31	75	0.0	28	75	0.0	29
Other General Academic	4	-42.9	14	8	100.0	13	7	-12.5	13	7	0.0	8	6	-14.3	9
CAREER & TECH INSTR	284	1.8	20	289	1.8	18	302	4.5	18	282	-6.6	18	253	-10.3	20
Lower Division													250		20
Upper Division													3		9
Business Technologies	82	-1.2	26	84	2.4	22	86	2.4	21	78	-9.3	21	70	-10.3	23
Food Serv & Hospitality Ed	61	8.9	24	60	-1.6	22	51	-15.0	24	51	0.0	22	53	3.9	23
Health Service Tech	129	0.8	14	133	3.1	13	149	12.0	14	133	-10.7	15	113	-15.0	17
Lower Division													110		17
Upper Division													3		9
Public Service Tech	12	0.0	28	12	0.0	23	16	33.3	22	20	25.0	16	17	-15.0	17

1/ Number of classes and average class size exclude courses with catalog numbers 093, 193, 293 (Cooperative Education) and 099, 199, 299 (Directed Studies).
Beginning Spring 2004, excludes Aerospace Studies and Military Science classes.

SOURCE: Banner Operational Data Store (ODS), IRO_SOCAD.

APPENDIX C-3
STUDENT SEMESTER HOURS (SSH) AND COURSE FTE
KAPI'OLANI COMMUNITY COLLEGE
FALL 2001 TO FALL 2005

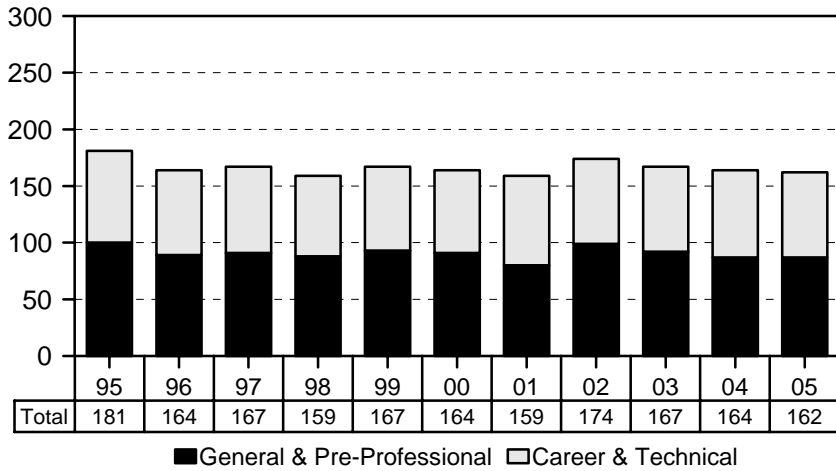
	FALL 2001			FALL 2002			FALL 2003			FALL 2004			FALL 2005		
	No.	SSH % Chg	COURSE FTE	No.	SSH % Chg	COURSE FTE	No.	SSH % Chg	COURSE FTE	No.	SSH % Chg	COURSE FTE	No.	SSH % Chg	COURSE FTE
TOTAL	63,795	3.3	4,253	63,381	-0.6	4,225	64,616	1.9	4,308	62,076	-3.9	4,138	62,073	0.0	4,142
Lower Division													61,982		4,136
Upper Division													91		6
GEN & PRE-PROF INSTR	46,082	5.5	3,072	46,869	1.7	3,124	48,259	3.0	3,216	46,225	-4.2	3,081	46,893	1.4	3,129
Humanities	26,258	5.9	1,752	25,965	-1.1	1,730	26,059	0.4	1,736	25,559	-1.9	1,705	25,808	1.0	1,722
Natural Sciences	13,661	1.7	910	14,542	6.4	970	15,030	3.4	1,003	14,266	-5.1	950	14,476	1.5	966
Social Sciences	5,914	12.5	394	6,086	2.9	405	6,940	14.0	462	6,184	-10.9	412	6,438	4.1	430
Other General Academic	249	13.7	16	276	10.8	19	230	-16.7	15	216	-6.1	14	171	-20.8	11
CAREER & TECH INSTR	17,713	-2.1	1,181	16,512	-6.8	1,101	16,357	-0.9	1,092	15,851	-3.1	1,057	15,180	-4.2	1,013
Lower Division													15,089		1,007
Upper Division													91		6
Business Technologies	6,306	-7.0	420	5,703	-9.6	380	5,481	-3.9	366	4,956	-9.6	331	4,762	-3.9	318
Food Serv & Hosp Ed	5,106	-2.6	340	4,515	-11.6	301	4,303	-4.7	287	3,914	-9.0	261	4,121	5.3	275
Health Service Tech	5,251	-0.5	351	5,418	3.2	362	5,479	1.1	366	5,962	8.8	397	5,417	-9.1	361
Lower Division													5,326		355
Upper Division													91		6
Public Service Tech	1,050	33.4	70	876	-16.6	58	1,094	24.9	73	1,019	-6.9	68	880	-13.6	59

Note: Student semester hours reported here may differ slightly from data source due to rounding.

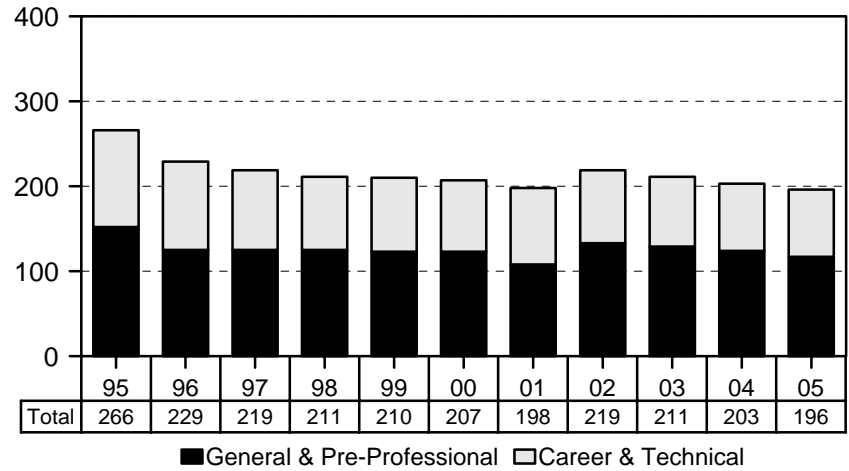
SOURCE: Banner Operational Data Store (ODS), IRO_SOCAD.

Kaua'i Community College, Fall Semesters 1995 - 2005

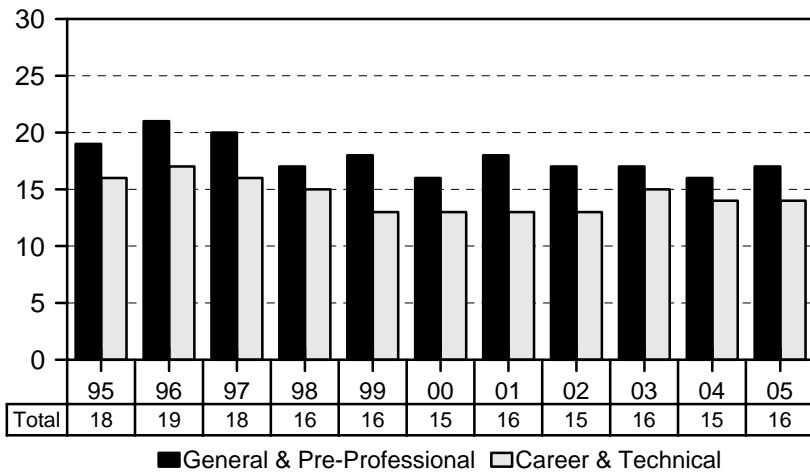
Number of Courses



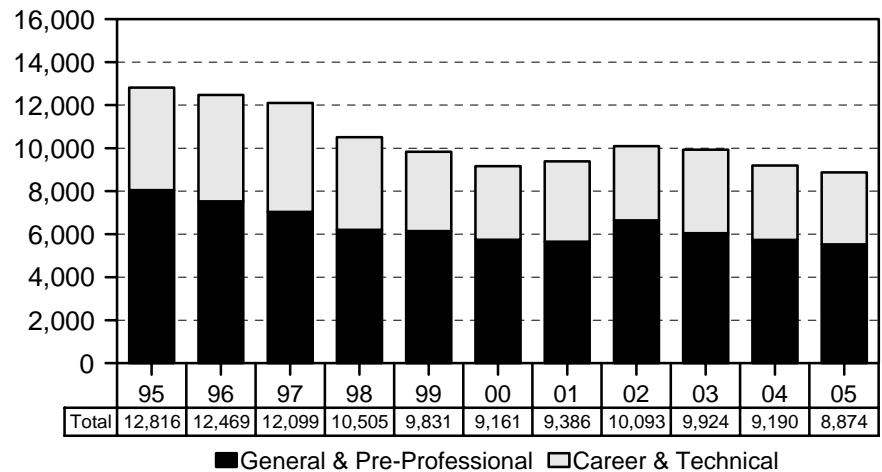
Number of Classes



Average Class Size



Student Semester Hours



APPENDIX D-1
 COURSE REGISTRATION AND AVERAGE CLASS SIZE SUMMARY, BY COURSE OFFERING
 KAUAI COMMUNITY COLLEGE
 FALL 2005

COURSE OFFERING	COURSES	CLASSES 1/		SEM HOURS 2/	STUDENT REGIS	STUDENT SEM HRS	COURSE FTE
		No.	Avg Size				
TOTAL	162	196	16	560	3,115	8,874	592
GEN & PRE-PROF INSTR	87	117	17	323	1,982	5,526	368
Humanities	43	65	16	193	1,041	3,139	210
Art	5	5	17	15	102	306	20
English	8	25	16	75	396	1,188	79
Foreign Languages	6	6	14	23	82	324	22
French	1	1	10	4	10	40	3
Hawaiian	1	1	20	4	20	80	5
Japanese	2	2	15	8	29	116	8
Spanish	2	2	12	7	23	88	6
Hawaiian Studies	4	4	18	12	73	219	15
History	3	7	18	21	129	387	26
Linguistics	1	1	20	3	20	60	4
Music	7	8	9	17	70	152	10
Philosophy	2	2	15	6	29	87	6
Religion	2	2	15	6	30	90	6
Speech	5	5	22	15	110	326	22
Natural Sciences	26	33	19	88	613	1,631	107
Biological Sciences	8	8	18	20	146	371	24
Biology	2	2	18	4	36	82	5
Botany	2	2	20	7	39	134	9
Microbiology	2	2	14	5	27	67	4
Zoology	2	2	22	4	44	88	6
Chemistry	4	4	19	8	77	155	10
Mathematics	9	15	19	46	283	856	57
Physical Sciences	1	1	11	3	11	33	2
Physics	1	1	11	3	11	33	2
Science	4	5	19	11	96	216	14
Social Sciences	8	9	21	27	186	558	38
Anthropology	1	1	18	3	18	54	4
Economics	1	1	6	3	6	18	1
Geography	1	1	16	3	16	48	3
Political Science	1	1	3	3	3	9	1
Psychology	3	4	35	12	140	420	28
Sociology	1	1	3	3	3	9	1
Other General Academic	10	10	13	15	142	198	13
Cooperative Arts & Sciences Ed	1			1	3	3	
Health, Physical Ed & Recreation	6	8	13	8	101	101	7
Interdisciplinary Studies	3	2	14	6	38	94	6
CAREER & TECH INSTR	75	79	14	237	1,133	3,348	224
Business Technologies	27	35	15	98	538	1,434	95
Accounting	6	8	12	21	98	244	16
Business	6	7	16	18	119	273	18
Business Law	1	1	9	3	9	27	2
Hotel Operations	4	3	18	10	56	168	11
Information & Computer Science	2	6	16	20	98	318	21

APPENDIX D-1 (cont.)

COURSE OFFERING	COURSES	CLASSES 1/		SEM HOURS 2/	STUDENT REGIS	STUDENT SEM HRS	COURSE FTE
		No.	Avg Size				
Office Administration & Tech	7	9	15	23	137	341	23
Business Machines	1	1	24	1	24	24	2
Office Admin & Tech.....	6	8	14	22	113	317	21
Sales & Marketing	1	1	21	3	21	63	4
Food Service Tech	8	9	14	35	125	485	32
Food Service	8	9	14	35	125	485	32
Health Service Tech	9	9	22	29	195	688	46
Nursing	9	9	22	29	195	688	46
Public Service Tech	10	10	6	28	56	159	11
Human Services	10	10	6	28	56	159	11
Education	10	10	6	28	56	159	11
Other Technologies	21	16	12	47	219	582	40
Auto Body Repair & Paint	4	3	21	9	68	194	13
Auto Mechanics Tech	5	4	11	11	53	128	9
Blueprint Reading	1	1	6	3	6	18	1
Electricity	2	1	8	4	17	41	3
Electronics	7	5	9	15	51	149	10
Machine Shop	1	1	4	3	4	12	1
Welding	1	1	20	2	20	40	3

1/ Excludes classes with catalog numbers 093, 193, 293 (Cooperative Education) and 099, 199, 299 (Directed Studies). Also excludes Aerospace Studies and Military Science classes.

2/ Excludes courses with catalog numbers 099, 199, 299 (Directed Studies).

Note: Semester hours and student semester hours reported here may differ slightly from data source due to rounding.

SOURCE: Banner Operational Data Store (ODS), IRO_SOCAD and IRO_SOCEX.

APPENDIX D-2
NUMBER OF CLASSES AND AVERAGE CLASS SIZE 1/
KAUA'I COMMUNITY COLLEGE
FALL 2001 TO FALL 2005

	FALL 2001			FALL 2002			FALL 2003			FALL 2004			FALL 2005		
	Classes No.	% Chg	Avg Size	Classes No.	% Chg	Avg Size	Classes No.	% Chg	Avg Size	Classes No.	% Chg	Avg Size	Classes No.	% Chg	Avg Size
TOTAL	198	-4.3	16	219	10.6	15	211	-3.7	16	203	-3.8	15	196	-3.3	16
GEN & PRE-PROF INSTR	108	-12.2	18	133	23.1	17	129	-3.0	17	124	-3.9	16	117	-5.4	17
Humanities	62	-8.8	17	74	19.4	16	70	-5.4	16	61	-12.9	16	65	5.7	16
Natural Sciences	30	-14.3	19	38	26.7	19	38	0.0	18	40	5.3	17	33	-18.4	19
Social Sciences	10	-9.1	26	10	0.0	24	10	0.0	21	11	10.0	20	9	-20.0	21
Other General Academic	6	-33.3	15	11	83.3	15	11	0.0	13	12	9.1	13	10	-18.2	13
CAREER & TECH INSTR	90	7.1	13	86	-4.4	13	82	-4.7	15	79	-3.7	14	79	0.0	14
Business Technologies	45	2.3	15	45	0.0	13	39	-13.3	16	33	-15.4	15	35	5.1	15
Food Service Tech	6	0.0	17	7	16.7	16	8	14.3	19	9	12.5	15	9	0.0	14
Health Service Tech	11	10.0	11	7	-36.4	19	7	0.0	22	10	42.9	20	9	-14.3	22
Public Service Tech	6	-14.3	8	7	16.7	7	6	-14.3	7	6	0.0	7	10	66.7	6
Other Technologies	22	29.4	11	20	-9.1	11	22	10.0	14	21	-4.5	11	16	-22.7	12

1/ Number of classes and average class size exclude courses with catalog numbers 093, 193, 293 (Cooperative Education) and 099, 199, 299 (Directed Studies).
Beginning Spring 2004, excludes Aerospace Studies and Military Science classes.

SOURCE: Banner Operational Data Store (ODS), IRO_SOCAD.

APPENDIX D-3
STUDENT SEMESTER HOURS (SSH) AND COURSE FTE
KAUA'I COMMUNITY COLLEGE
FALL 2001 TO FALL 2005

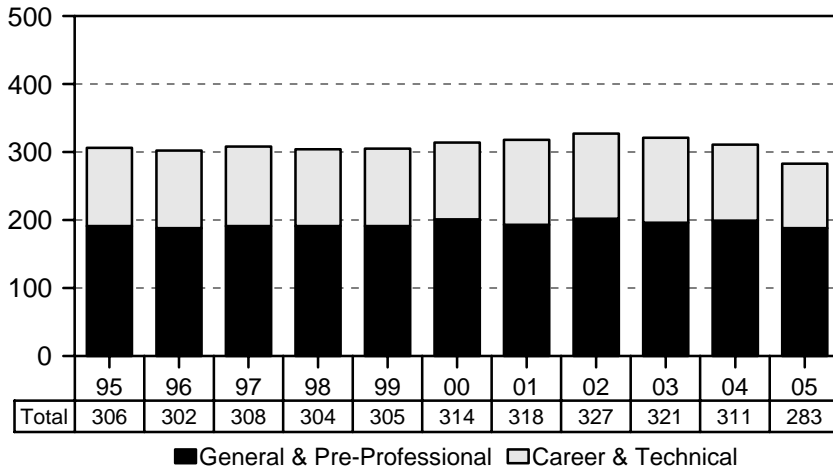
	FALL 2001			FALL 2002			FALL 2003			FALL 2004			FALL 2005		
	No.	SSH % Chg	COURSE FTE	No.	SSH % Chg	COURSE FTE	No.	SSH % Chg	COURSE FTE	No.	SSH % Chg	COURSE FTE	No.	SSH % Chg	COURSE FTE
TOTAL	9,386	2.5	624	10,093	7.5	672	9,924	-1.7	658	9,190	-7.4	614	8,874	-3.4	592
GEN & PRE-PROF INSTR	5,647	-1.6	376	6,637	17.5	442	6,045	-8.9	400	5,731	-5.2	383	5,526	-3.6	368
Humanities	3,308	0.5	220	3,711	12.2	247	3,484	-6.1	231	3,051	-12.4	204	3,139	2.9	210
Natural Sciences	1,460	-0.8	97	1,963	34.5	132	1,733	-11.7	115	1,808	4.3	121	1,631	-9.8	107
Social Sciences	771	2.7	52	720	-6.6	47	621	-13.8	41	656	5.6	44	558	-14.9	38
Other General Academic	108	-51.4	7	243	125.0	16	207	-14.8	13	216	4.3	14	198	-8.3	13
CAREER & TECH INSTR	3,739	9.2	248	3,456	-7.6	230	3,879	12.2	258	3,459	-10.8	231	3,348	-3.2	224
Business Technologies	1,865	3.2	124	1,597	-14.4	106	1,611	0.9	107	1,352	-16.1	91	1,434	6.1	95
Food Service Tech	419	-16.4	28	467	11.5	31	576	23.3	38	526	-8.7	35	485	-7.8	32
Health Service Tech	423	9.6	28	466	10.2	31	631	35.4	42	719	13.9	48	688	-4.3	46
Public Service Tech	142	8.4	9	133	-6.3	9	119	-10.5	8	133	11.8	9	159	19.5	11
Other Technologies	890	49.1	59	793	-10.9	53	942	18.8	63	729	-22.6	48	582	-20.2	40

Note: Student semester hours reported here may differ slightly from data source due to rounding.

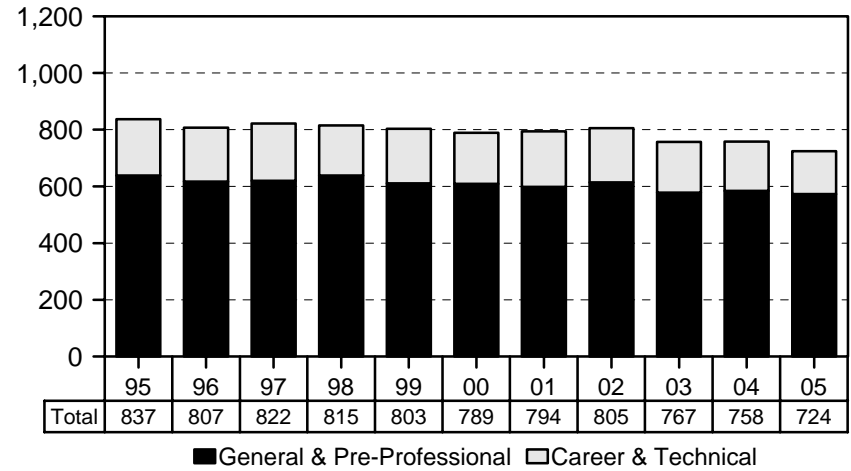
SOURCE: Banner Operational Data Store (ODS), IRO_SOCAD.

Leeward Community College, Fall Semesters 1995 - 2005

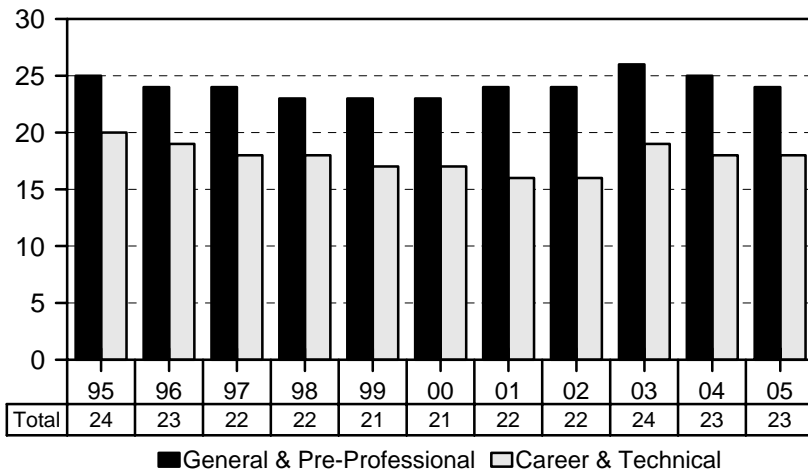
Number of Courses



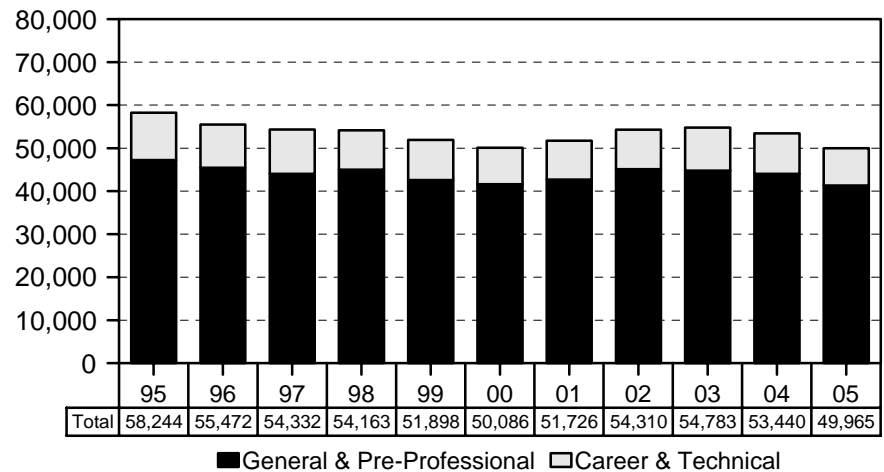
Number of Classes



Average Class Size



Student Semester Hours



APPENDIX E-1
 COURSE REGISTRATION AND AVERAGE CLASS SIZE SUMMARY, BY COURSE OFFERING
 LEEWARD COMMUNITY COLLEGE
 FALL 2005

COURSE OFFERING	COURSES	CLASSES 1/		SEM HOURS 2/	STUDENT REGIS	STUDENT SEM HRS	COURSE FTE
		No.	Avg Size				
TOTAL	283	724	23	2,194	16,593	49,965	3,326
GEN & PRE-PROF INSTR	188	573	24	1,711	13,754	41,324	2,751
Humanities	111	333	22	995	7,387	22,269	1,481
Art	14	29	24	87	711	2,131	142
Asian Studies.....	3	4	23	12	91	273	18
Communications	2	3	22	9	67	201	13
Dance	2	2	24	6	47	141	9
Drama	5	8	21	24	168	504	34
English	21	125	19	382	2,380	7,282	485
English as a Second Language	11	15	18	45	275	825	55
Foreign Languages	11	27	17	93	455	1,570	104
Hawaiian	2	4	16	16	65	260	17
Japanese	3	8	19	30	151	562	37
Spanish	4	13	16	39	208	624	42
Tagalog	2	2	16	8	31	124	8
Hawaiian Studies	1	8	26	24	210	630	42
History	6	34	33	102	1,127	3,381	225
Humanities	1	1	27	3	27	81	5
Journalism	1	1	17	3	17	51	3
Linguistics	1	1	20	3	20	60	4
Music	21	25	14	52	350	813	54
Philosophy	4	14	31	42	437	1,311	87
Religion	5	11	33	33	358	1,074	72
Speech	2	25	26	75	647	1,941	129
Natural Sciences	52	145	24	444	3,517	10,813	720
Biochemistry	2	3	33	9	99	297	20
Biological Sciences	15	27	26	85	695	2,194	145
Biology	7	10	26	31	259	802	53
Botany	3	3	28	8	84	229	15
Microbiology	2	7	28	18	193	527	35
Zoology	3	7	23	28	159	636	42
Chemistry	4	5	21	20	106	424	28
Engineering	4	4	18	13	73	236	16
Civil Engineering	1	1	9	3	9	27	2
Electrical Engineering	2	2	23	7	46	155	10
Mechanical Engineering	1	1	18	3	18	54	4
Mathematics	15	83	24	255	1,989	6,088	406
Oceanography	3	7	29	17	202	544	36
Physical Sciences	8	14	22	37	312	866	58
Astronomy	1	7	25	21	175	525	35
Geology & Geophysics	2	2	25	4	49	117	8
Physics	5	5	18	12	88	224	15
Science	1	2	21	8	41	164	11
Social Sciences	22	87	31	259	2,662	7,944	530
American Studies	2	3	26	9	77	231	15
Anthropology	2	10	31	30	310	930	62
Economics	3	15	29	45	433	1,299	87
Geography	4	9	31	25	279	797	53

APPENDIX E-1 (cont.)

COURSE OFFERING	COURSES	CLASSES 1/		SEM HOURS 2/	STUDENT REGIS	STUDENT SEM HRS	COURSE FTE
		No.	Avg Size				
Political Science	3	9	32	27	286	856	57
Psychology	4	28	31	84	868	2,604	174
Social Sciences	1	3	21	9	64	192	13
Sociology	2	9	35	27	313	939	63
Women's Studies	1	1	32	3	32	96	6
Other General Academic	3	8	24	13	188	298	20
Interdisciplinary Studies	3	8	24	13	188	298	20
CAREER & TECH INSTR	95	151	18	483	2,839	8,641	575
Business Technologies	46	93	19	278	1,831	5,333	355
Accounting	7	15	24	45	359	1,077	72
Business	20	39	18	115	735	2,045	136
Finance	1	1	12	3	12	36	2
Information & Computer Science	14	29	19	88	549	1,647	110
Management	2	2	21	6	41	123	8
Marketing	1	1	28	3	28	84	6
Office Administration & Tech	1	6	18	18	107	321	21
Office Admin & Tech	1	6	18	18	107	321	21
Food Service Tech	9	9	16	36	148	535	36
Food Service	9	9	16	36	148	535	36
Health Service Tech	4	5	21	15	107	321	21
Food Sci & Human Nutrition	3	4	18	12	70	210	14
Pharmacology	1	1	37	3	37	111	7
Public Service Tech	8	14	19	42	268	804	53
Human Services	8	14	19	42	268	804	53
Education	3	3	26	9	77	231	15
Human Services	4	8	16	24	129	387	26
Law	1	3	21	9	62	186	12
Other Technologies	28	30	15	112	485	1,648	110
Auto Mechanics Tech	12	14	13	61	192	783	52
Digital Media	10	11	18	33	195	585	39
TV Production	6	5	17	18	98	280	19

1/ Excludes classes with catalog numbers 093, 193, 293 (Cooperative Education) and 099, 199, 299 (Directed Studies). Also excludes Aerospace Studies and Military Science classes.

2/ Excludes courses with catalog numbers 099, 199, 299 (Directed Studies).

Note: Semester hours and student semester hours reported here may differ slightly from data source due to rounding.

SOURCE: Banner Operational Data Store (ODS), IRO_SOCAD and IRO_SOCEX.

APPENDIX E-2
NUMBER OF CLASSES AND AVERAGE CLASS SIZE 1/
LEEWARD COMMUNITY COLLEGE
FALL 2001 TO FALL 2005

	FALL 2001			FALL 2002			FALL 2003			FALL 2004			FALL 2005		
	Classes No.	% Chg	Avg Size	Classes No.	% Chg	Avg Size	Classes No.	% Chg	Avg Size	Classes No.	% Chg	Avg Size	Classes No.	% Chg	Avg Size
TOTAL	794	0.6	22	805	1.4	22	757	-6.0	24	758	0.1	23	724	-4.5	23
GEN & PRE-PROF INSTR	598	-1.8	24	614	2.7	24	578	-5.9	26	584	1.0	25	573	-1.9	24
Humanities	344	-2.0	22	359	4.4	22	334	-7.0	23	336	0.6	23	333	-0.9	22
Natural Sciences	153	1.3	25	157	2.6	26	144	-8.3	27	144	0.0	26	145	0.7	24
Social Sciences	90	0.0	31	90	0.0	31	93	3.3	32	95	2.2	31	87	-8.4	31
Other General Academic	11	-35.3	13	8	-27.3	14	7	-12.5	20	9	28.6	19	8	-11.1	24
CAREER & TECH INSTR	196	8.9	16	191	-2.6	16	179	-6.3	19	174	-2.8	18	151	-13.2	18
Business Technologies	125	11.6	16	119	-4.8	16	113	-5.0	19	114	0.9	18	93	-18.4	19
Food Service Tech	15	-21.1	13	15	0.0	15	11	-26.7	17	9	-18.2	12	9	0.0	16
Health Service Tech	7	40.0	18	8	14.3	21	3	-62.5	36	5	66.7	24	5	0.0	21
Public Service Tech	11	-15.4	20	14	27.3	19	17	21.4	19	14	-17.6	19	14	0.0	19
Other Technologies	38	22.6	14	35	-7.9	14	35	0.0	16	32	-8.6	17	30	-6.3	15

1/ Number of classes and average class size exclude courses with catalog numbers 093, 193, 293 (Cooperative Education) and 099, 199, 299 (Directed Studies).
Beginning Spring 2004, excludes Aerospace Studies and Military Science classes. Data have been adjusted for prior years

SOURCE: Banner Operational Data Store (ODS), IRO_SOCAD.

APPENDIX E-3
 STUDENT SEMESTER HOURS (SSH) AND COURSE FTE
 LEEWARD COMMUNITY COLLEGE
 FALL 2001 TO FALL 2005

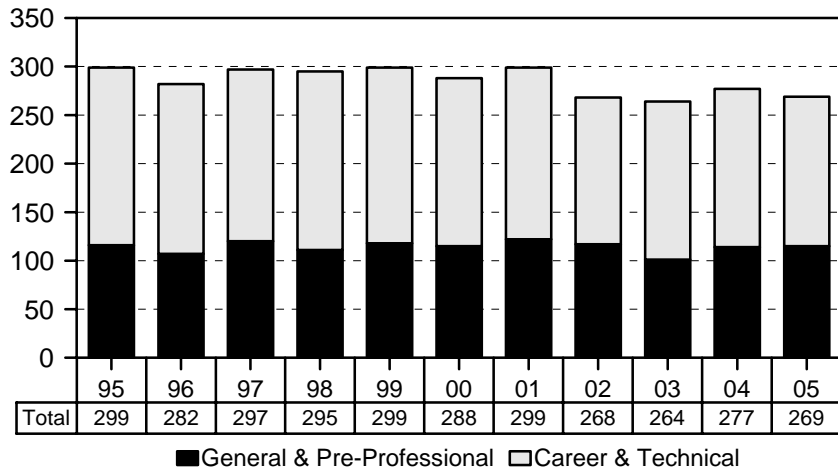
	FALL 2001			FALL 2002			FALL 2003			FALL 2004			FALL 2005		
	No.	SSH % Chg	COURSE FTE	No.	SSH % Chg	COURSE FTE	No.	SSH % Chg	COURSE FTE	No.	SSH % Chg	COURSE FTE	No.	SSH % Chg	COURSE FTE
TOTAL	51,726	3.3	3,447	54,310	5.0	3,619	54,783	0.9	3,649	53,440	-2.5	3,562	49,965	-6.5	3,326
GEN & PRE-PROF INSTR	42,691	2.5	2,844	45,079	5.6	3,005	44,749	-0.7	2,983	44,005	-1.7	2,934	41,324	-6.1	2,751
Humanities	22,615	1.6	1,507	24,218	7.1	1,614	23,617	-2.5	1,575	23,430	-0.8	1,562	22,269	-5.0	1,481
Natural Sciences	11,560	3.6	769	12,307	6.5	821	11,974	-2.7	797	11,544	-3.6	770	10,813	-6.3	720
Social Sciences	8,225	6.8	549	8,309	1.0	553	8,905	7.2	594	8,678	-2.5	579	7,944	-8.5	530
Other General Academic	291	-43.5	19	245	-15.8	17	253	3.3	17	353	39.5	23	298	-15.6	20
CAREER & TECH INSTR	9,035	6.8	603	9,231	2.2	614	10,034	8.7	666	9,435	-6.0	628	8,641	-8.4	575
Business Technologies	5,567	4.4	371	5,506	-1.1	367	6,171	12.1	410	6,128	-0.7	408	5,333	-13.0	355
Food Service Tech	641	-19.6	43	728	13.6	49	736	1.1	49	377	-48.8	25	535	41.9	36
Health Service Tech	378	20.0	26	510	34.9	34	324	-36.5	21	366	13.0	24	321	-12.3	21
Public Service Tech	663	10.3	44	816	23.1	54	981	20.2	65	795	-19.0	53	804	1.1	53
Other Technologies	1,786	26.6	119	1,671	-6.4	110	1,822	9.0	121	1,769	-2.9	118	1,648	-6.8	110

Note: Student semester hours reported here may differ slightly from data source due to rounding.

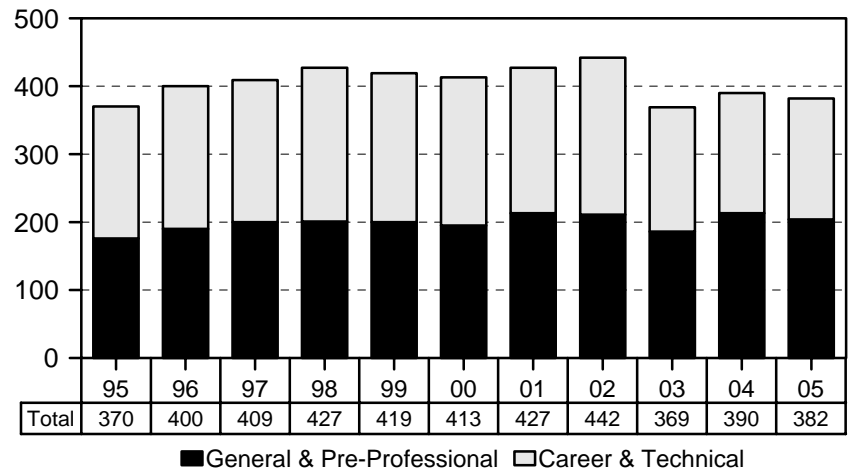
SOURCE: Banner Operational Data Store (ODS), IRO_SOCAD.

Maui Community College, Fall Semesters 1995 - 2005

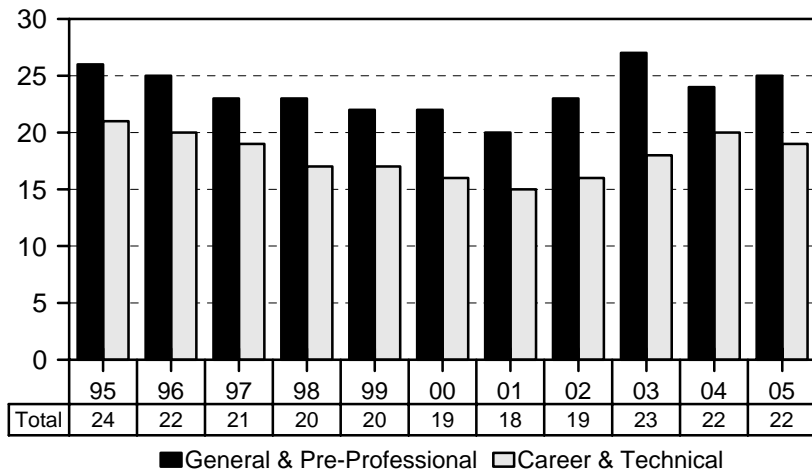
Number of Courses



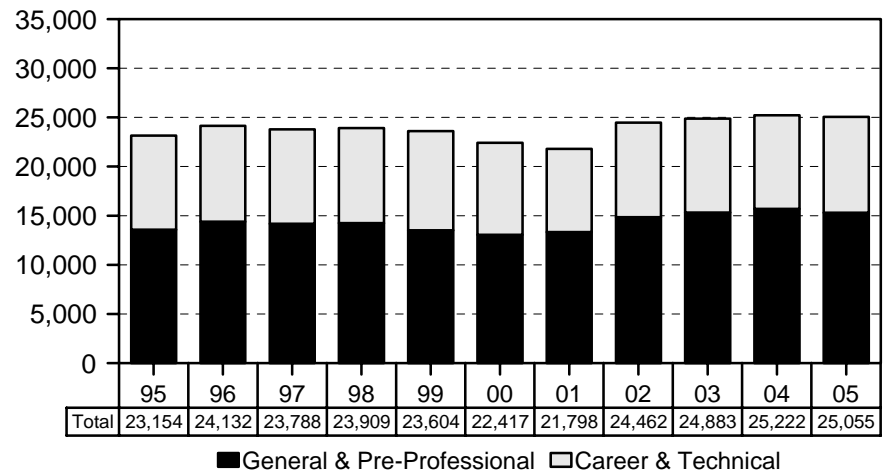
Number of Classes



Average Class Size



Student Semester Hours



APPENDIX F-1
 COURSE REGISTRATION AND AVERAGE CLASS SIZE SUMMARY, BY COURSE OFFERING
 MAUI COMMUNITY COLLEGE
 FALL 2005

COURSE OFFERING	COURSES	CLASSES 1/		SEM HOURS 2/	STUDENT REGIS	STUDENT SEM HRS	COURSE FTE
		No.	Avg Size				
TOTAL	269	382	22	1,121	8,534	25,055	1,672
Lower Division	262	375	22	1,102	8,461	24,882	1,660
Upper Division	7	7	10	19	73	173	12
GEN & PRE-PROF INSTR	115	204	25	614	5,008	15,305	1,022
Humanities	52	108	23	327	2,477	7,559	505
Art	6	7	22	15	155	355	24
Communications	2	3	26	9	79	237	16
Drama & Theatre	2	2	20	6	40	120	8
English	14	50	19	150	970	2,910	194
Foreign Languages	7	14	21	53	292	1,142	76
Hawaiian	2	5	22	20	108	432	29
Japanese	2	3	24	12	71	284	19
Spanish	3	6	19	21	113	426	28
Hawaiian Studies	3	6	26	17	156	457	30
History	3	8	42	24	338	1,014	68
Humanities	1	3	32	9	97	291	19
Journalism	1	1	13	3	13	39	3
Music	7	5	24	14	119	340	23
Philosophy	3	3	28	9	83	249	17
Religion	1	1	46	3	46	138	9
Speech	2	5	18	15	89	267	18
Natural Sciences	40	60	25	182	1,508	4,757	318
Biological Sciences	11	15	34	49	516	1,806	121
Biology	8	10	25	31	249	777	52
Botany	1	3	32	9	95	285	19
Microbiology	1	1	56	5	56	280	19
Zoology	1	1	116	4	116	464	31
Chemistry	2	3	17	5	50	100	7
Mathematics	19	34	22	103	739	2,218	148
Oceanography	4	4	22	10	87	229	15
Physical Sciences	3	3	31	11	93	312	21
Astronomy	1	1	60	3	60	180	12
Physics	2	2	17	8	33	132	9
Science	1	1	23	4	23	92	6
Social Sciences	15	30	31	91	917	2,770	184
Anthropology	1	5	35	15	177	531	35
Economics	4	5	26	15	132	396	26
Family Resources	3	3	24	9	71	213	14
Geography	1	3	25	9	76	228	15
Political Science	1	1	28	3	28	84	6
Psychology	4	11	33	34	360	1,099	73
Sociology	1	2	37	6	73	219	15
Other General Academic	8	6	17	14	106	219	15
Coop Arts & Science Education	2			3	4	8	1
Interdisciplinary Studies	4	4	15	5	61	88	6
Learning Skills	2	2	21	6	41	123	8
CAREER & TECH INSTR	154	178	19	507	3,526	9,750	650
Lower Division	147	171	20	488	3,453	9,577	638
Upper Division	7	7	10	19	73	173	12
Business Technologies	46	62	21	187	1,295	3,775	252
Lower Division	39	55	22	168	1,222	3,602	240
Upper Division	7	7	10	19	73	173	12

APPENDIX F-1 (cont.)

COURSE OFFERING	COURSES	CLASSES 1/ No.	Avg Size	SEM HOURS 2/	STUDENT REGIS	STUDENT SEM HRS	COURSE FTE
Accounting	8	10	19	30	193	579	39
Lower Division	7	9	20	27	184	552	37
Upper Division	1	1	9	3	9	27	2
Business	10	11	25	26	277	711	48
Lower Division	8	9	27	22	243	655	44
Upper Division	2	2	17	4	34	56	4
Bus Comp Info Sys	8	17	20	53	342	1,024	68
Business Law	1	1	25	3	25	75	5
Hospitality & Tourism	6	5	18	18	96	285	19
Information & Computer Science	10	14	21	45	289	882	59
Lower Division	8	12	22	39	270	825	55
Upper Division	2	2	10	6	19	57	4
Management	3	4	18	12	73	219	14
Lower Division	1	2	31	6	62	186	12
Upper Division	2	2	6	6	11	33	2
Food Service Tech	19	34	15	84	531	1,198	80
Food Service	19	34	15	84	531	1,198	80
Health Service Tech	25	26	33	65	846	2,382	158
Dental Assisting	5	5	16	12	81	243	16
Food Sci & Human Nutrition	1	3	27	9	82	246	16
Health	1	1	18	1	18	18	1
Nursing	16	15	38	37	565	1,575	105
Pharmacology	2	2	50	6	100	300	20
Public Service Tech	16	20	15	59	302	865	58
Administration of Justice	2	2	22	6	43	129	9
Human Services	13	17	14	52	252	729	49
Education	7	11	13	32	141	389	26
Human Services	2	2	20	6	40	120	8
Social Services	4	4	15	14	71	220	15
Occupational Safety & Health	1	1	7	1	7	7	
Other Technologies	47	36	14	110	550	1,526	102
Agriculture	6	6	13	18	92	254	17
Auto Body Repair & Paint	10	5	16	10	82	164	11
Auto Mechanics Tech	9	9	14	29	127	411	27
Blueprint Reading	1	1	14	3	14	42	3
Carpentry	3	1	8	5	18	45	3
Electricity	2	2	15	5	29	72	5
Electronics	5	3	16	13	51	173	12
Energy	3	1	10	6	27	76	5
Fashion Tech	5	5	14	15	69	207	14
Maintenance	3	3	14	6	41	82	5
Other Occup/Vocational	1			2	2	4	
Coop Voc Educ	1			2	2	4	

1/ Excludes classes with catalog numbers 093, 193, 293 (Cooperative Education) and 099, 199, 299 (Directed Studies). Also excludes Aerospace Studies and Military Science classes.

2/ Excludes courses with catalog numbers 099, 199, 299 (Directed Studies).

Note: Semester hours and student semester hours reported here may differ slightly from data source due to rounding.

SOURCE: Banner Operational Data Store (ODS), IRO_SOCAD and IRO_SOCEX.

APPENDIX F-2
NUMBER OF CLASSES AND AVERAGE CLASS SIZE 1/
MAUI COMMUNITY COLLEGE
FALL 2001 TO FALL 2005

	FALL 2001			FALL 2002			FALL 2003			FALL 2004			FALL 2005		
	Classes No.	% Chg	Avg Size	Classes No.	% Chg	Avg Size	Classes No.	% Chg	Avg Size	Classes No.	% Chg	Avg Size	Classes No.	% Chg	Avg Size
TOTAL	427	3.4	18	442	3.5	19	369	-16.5	23	390	5.7	22	382	-2.1	22
Lower Division													375		22
Upper Division													7		10
GEN & PRE-PROF INSTR	213	9.2	20	211	-0.9	23	186	-11.8	27	213	14.5	24	204	-4.2	25
Humanities	119	2.6	19	119	0.0	22	101	-15.1	25	120	18.8	22	108	-10.0	23
Natural Sciences	56	16.7	21	52	-7.1	26	55	5.8	28	53	-3.6	27	60	13.2	25
Social Sciences	31	14.8	25	35	12.9	25	27	-22.9	32	33	22.2	29	30	-9.1	31
Other General Academic	7	75.0	13	5	-28.6	15	3	-40.0	21	7	133.3	14	6	-14.3	17
CAREER & TECH INSTR	214	-1.8	15	231	7.9	16	183	-20.8	18	177	-3.3	20	178	0.6	19
Lower Division													171		20
Upper Division													7		10
Business Technologies	84	-12.5	18	91	8.3	19	57	-37.4	23	61	7.0	20	62	1.6	21
Lower Division													55		22
Upper Division													7		10
Food Service Tech	23	-4.2	13	21	-8.7	17	30	42.9	16	35	16.7	17	34	-2.9	15
Health Service Tech	38	8.6	15	49	28.9	13	36	-26.5	17	29	-19.4	30	26	-10.3	33
Public Service Tech	22	29.4	15	17	-22.7	18	19	11.8	21	15	-21.1	18	20	33.3	15
Other Technologies	47	2.2	12	53	12.8	13	41	-22.6	14	37	-9.8	15	36	-2.7	14

1/ Number of classes and average class size exclude courses with catalog numbers 093, 193, 293 (Cooperative Education) and 099, 199, 299 (Directed Studies).
Beginning Spring 2004, excludes Aerospace Studies and Military Science classes.

SOURCE: Banner Operational Data Store (ODS), IRO_SOCAD.

APPENDIX F-3
 STUDENT SEMESTER HOURS (SSH) AND COURSE FTE
 MAUI COMMUNITY COLLEGE
 FALL 2001 TO FALL 2005

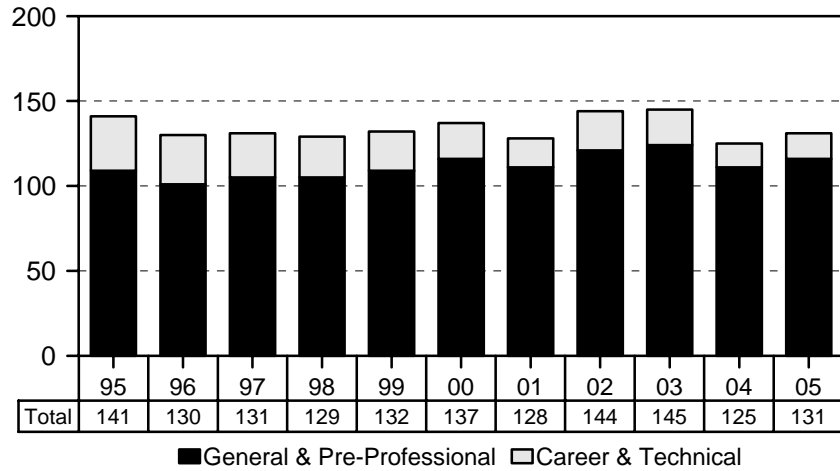
	FALL 2001			FALL 2002			FALL 2003			FALL 2004			FALL 2005		
	No.	SSH % Chg	COURSE FTE	No.	SSH % Chg	COURSE FTE	No.	SSH % Chg	COURSE FTE	No.	SSH % Chg	COURSE FTE	No.	SSH % Chg	COURSE FTE
TOTAL	21,798	-2.8	1,452	24,462	12.2	1,633	24,883	1.7	1,660	25,222	1.4	1,682	25,055	-0.7	1,672
Lower Division													24,882		1,660
Upper Division													173		12
GEN & PRE-PROF INSTR	13,345	2.2	889	14,863	11.4	993	15,309	3.0	1,022	15,692	2.5	1,047	15,305	-2.5	1,022
Humanities	7,052	-0.6	470	7,846	11.3	523	7,658	-2.4	510	8,138	6.3	542	7,559	-7.1	505
Natural Sciences	3,787	9.0	252	4,219	11.4	282	4,943	17.2	331	4,514	-8.7	301	4,757	5.4	318
Social Sciences	2,301	0.3	154	2,597	12.9	174	2,589	-0.3	173	2,816	8.8	189	2,770	-1.6	184
Other General Academic	205	0.5	13	201	-2.0	14	119	-40.8	8	224	88.2	15	219	-2.2	15
CAREER & TECH INSTR	8,453	-9.6	563	9,599	13.6	640	9,574	-0.3	638	9,530	-0.5	635	9,750	2.3	650
Lower Division													9,577		638
Upper Division													173		12
Business Technologies	3,909	-17.2	261	4,307	10.2	287	3,888	-9.7	260	3,626	-6.7	242	3,775	4.1	252
Lower Division													3,602		240
Upper Division													173		12
Food Service Tech	885	-17.0	59	932	5.3	62	1,103	18.3	74	1,389	25.9	93	1,198	-13.8	80
Health Service Tech	1,426	5.1	95	1,784	25.1	119	1,719	-3.6	114	2,252	31.0	150	2,382	5.8	158
Public Service Tech	793	23.3	53	910	14.8	61	1,296	42.4	86	809	-37.6	54	865	6.9	58
Other Technologies	1,422	-8.5	94	1,664	17.0	111	1,561	-6.2	104	1,439	-7.8	95	1,526	6.0	102
Other Occup/Voc	18	63.6	1	2	-88.9		7	250.0		15	114.3	1	4	-73.3	

Note: Student semester hours reported here may differ slightly from data source due to rounding.

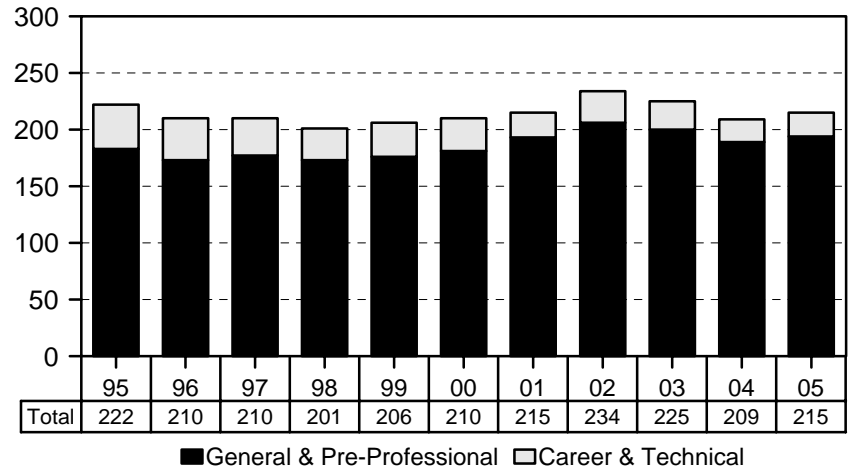
SOURCE: Banner Operational Data Store (ODS), IRO_SOCAD.

Windward Community College, Fall Semesters 1995 - 2005

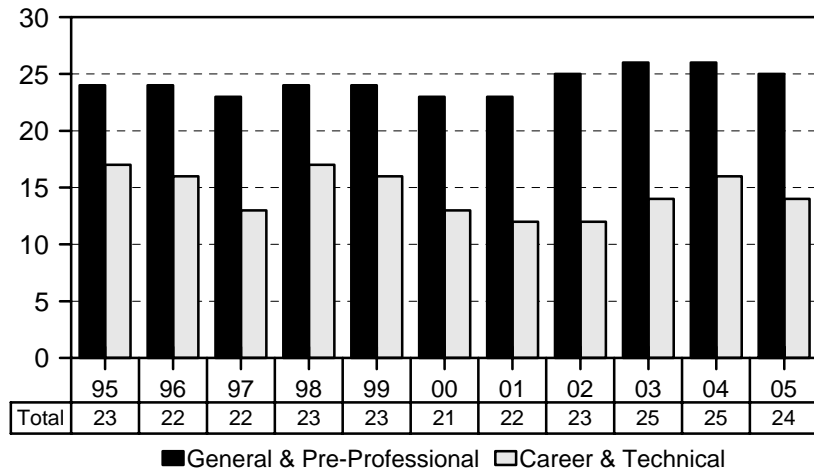
Number of Courses



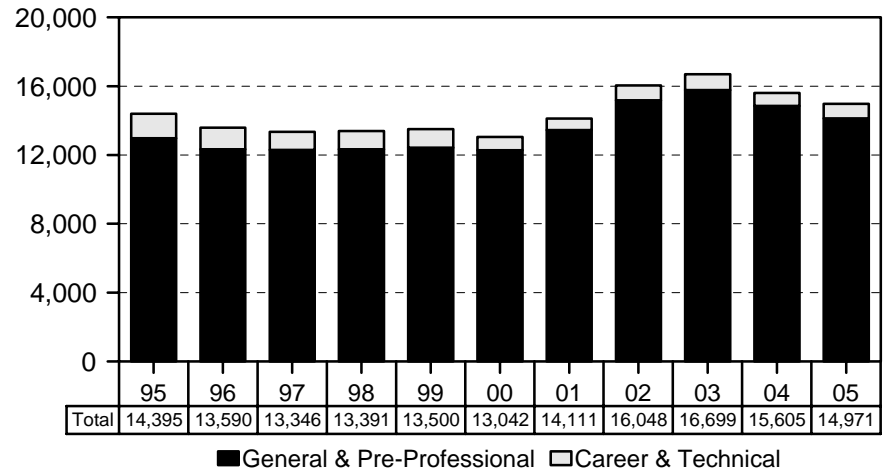
Number of Classes



Average Class Size



Student Semester Hours



APPENDIX G-1
 COURSE REGISTRATION AND AVERAGE CLASS SIZE SUMMARY, BY COURSE OFFERING
 WINDWARD COMMUNITY COLLEGE
 FALL 2005

COURSE OFFERING	COURSES	CLASSES 1/		SEM HOURS 2/	STUDENT REGIS	STUDENT SEM HRS	COURSE FTE
		No.	Avg Size				
TOTAL	131	215	24	621	5,101	14,971	1,000
GEN & PRE-PROF INSTR	116	194	25	563	4,801	14,133	944
Humanities	59	99	23	292	2,292	6,908	462
Art	15	16	20	48	316	942	63
Communications	1	1	28	3	28	84	6
English	10	25	22	75	541	1,623	108
Foreign Languages	5	8	19	32	153	612	41
Hawaiian	2	4	20	16	78	312	21
Japanese	2	2	16	8	31	124	8
Spanish	1	2	22	8	44	176	12
Hawaiian Studies	1	5	32	15	158	474	32
History	5	16	31	48	501	1,503	100
Humanities	1	1	4	1	4	4	
Journalism	2	2	19	3	38	98	7
Music	6	7	13	13	93	188	13
Philosophy	4	7	27	21	192	576	38
Religion	4	5	26	15	129	387	26
Speech	1	3	25	9	75	225	15
Theatre	4	3	21	9	64	192	13
Natural Sciences	38	59	24	159	1,435	4,035	268
Biological Sciences	14	19	23	47	440	1,142	76
Biology	6	8	21	18	164	396	26
Botany	4	3	19	10	59	194	13
Microbiology	2	4	28	11	113	318	21
Zoology	2	4	26	8	104	234	16
Chemistry	5	8	21	18	171	409	27
Geographic Info Sys	1	1	12	3	12	36	2
Mathematics	11	21	26	67	549	1,739	116
Meteorology	1	1	28	3	28	84	6
Oceanography	2	2	22	4	43	111	7
Physical Sciences	4	7	27	17	192	514	34
Astronomy	1	3	35	9	104	312	21
Geology-Geophysics	3	4	22	8	88	202	13
Social Sciences	18	35	29	108	1,057	3,122	209
Anthropology	1	3	32	9	97	291	19
Economics	2	6	28	18	165	495	33
Geography	3	4	26	10	102	270	18
Political Science	3	5	26	15	128	384	26
Psychology	4	13	31	39	404	1,212	81
Social Sciences	3			5	27	68	5
Sociology	2	4	34	12	134	402	27
Other General Academic	1	1	17	4	17	68	5
Learning Skills	1	1	17	4	17	68	5

APPENDIX G-1 (cont.)

COURSE OFFERING	COURSES	CLASSES 1/		SEM HOURS 2/	STUDENT REGIS	STUDENT SEM HRS	COURSE FTE
		No.	Avg Size				
CAREER & TECH INSTR	15	21	14	58	300	838	56
Business Technologies	6	14	17	40	240	690	46
Accounting	1	3	22	9	65	195	13
Information & Computer Science	3	9	16	27	148	444	30
Management	1	1	12	3	12	36	2
Office Administration & Tech	1	1	15	1	15	15	1
Office Admin & Tech	1	1	15	1	15	15	1
Technology	9	7	8	18	60	148	10
Agriculture	9	7	8	18	60	148	10

1/ Excludes classes with catalog numbers 093, 193, 293 (Cooperative Education) and 099, 199, 299 (Directed Studies). Also excludes Aerospace Studies and Military Science classes.

2/ Excludes courses with catalog numbers 099, 199, 299 (Directed Studies).

Note: Semester hours and student semester hours reported here may differ slightly from data source due to rounding.

SOURCE: Banner Operational Data Store (ODS), IRO_SOCAD and IRO_SOCEX.

APPENDIX G-2
NUMBER OF CLASSES AND AVERAGE CLASS SIZE 1/
WINDWARD COMMUNITY COLLEGE
FALL 2001 TO FALL 2005

	FALL 2001			FALL 2002			FALL 2003			FALL 2004			FALL 2005		
	Classes No.	% Chg	Avg Size	Classes No.	% Chg	Avg Size	Classes No.	% Chg	Avg Size	Classes No.	% Chg	Avg Size	Classes No.	% Chg	Avg Size
TOTAL	215	2.4	22	234	8.8	23	225	-3.8	25	209	-7.1	25	215	2.9	24
GEN & PRE-PROF INSTR	193	6.6	23	206	6.7	25	200	-2.9	26	189	-5.5	26	194	2.6	25
Humanities	102	3.0	23	106	3.9	24	104	-1.9	25	101	-2.9	25	99	-2.0	23
Natural Sciences	52	6.1	22	56	7.7	24	55	-1.8	25	51	-7.3	26	59	15.7	24
Social Sciences	33	22.2	27	36	9.1	30	36	0.0	32	34	-5.6	33	35	2.9	29
Other General Academic	6	0.0	13	8	33.3	11	5	-37.5	17	3	-40.0	18	1	-66.7	17
CAREER & TECH INSTR	22	-24.1	12	28	27.3	12	25	-10.7	14	20	-20.0	16	21	5.0	14
Business Technologies	20	-16.7	12	21	5.0	13	17	-19.0	15	15	-11.8	17	14	-6.7	17
Public Service Tech				1		32	3	200.0	18		-100.0				
Other Technologies	2	-60.0	8	6	200.0	7	5	-16.7	11	5	0.0	11	7	40.0	8

1/ Number of classes and average class size exclude courses with catalog numbers 093, 193, 293 (Cooperative Education) and 099, 199, 299 (Directed Studies).
Beginning Spring 2004, excludes Aerospace Studies and Military Science classes. Data have been adjusted for prior years.

SOURCE: Banner Operational Data Store (ODS), IRO_SOCAD.

APPENDIX G-3
 STUDENT SEMESTER HOURS (SSH) AND COURSE FTE
 WINDWARD COMMUNITY COLLEGE
 FALL 2001 TO FALL 2005

	FALL 2001			FALL 2002			FALL 2003			FALL 2004			FALL 2005		
	No.	SSH % Chg	COURSE FTE	No.	SSH % Chg	COURSE FTE	No.	SSH % Chg	COURSE FTE	No.	SSH % Chg	COURSE FTE	No.	SSH % Chg	COURSE FTE
TOTAL	14,111	8.2	940	16,048	13.7	1,072	16,699	4.1	1,113	15,605	-6.6	1,037	14,971	-4.1	1,000
GEN & PRE-PROF INSTR	13,451	9.6	896	15,177	12.8	1,014	15,768	3.9	1,051	14,858	-5.8	987	14,133	-4.9	944
Humanities	7,115	11.2	473	7,613	7.0	507	7,979	4.8	532	7,519	-5.8	499	6,908	-8.1	462
Natural Sciences	3,330	0.7	221	4,000	20.1	267	4,078	2.0	272	3,851	-5.6	257	4,035	4.8	268
Social Sciences	2,795	22.7	188	3,347	19.7	224	3,468	3.6	231	3,348	-3.5	222	3,122	-6.8	209
Other General Academic	211	-28.2	14	217	2.8	16	243	12.0	16	140	-42.4	9	68	-51.4	5
CAREER & TECH INSTR	660	-14.1	44	871	32.0	58	931	6.9	62	747	-19.8	50	838	12.2	56
Business Technologies	612	-9.9	41	644	5.2	43	629	-2.3	41	658	4.6	44	690	4.9	46
Public Service Tech				96		6	159	65.6	11		-100.0				
Other Technologies	48	-46.1	3	131	172.9	9	143	9.2	10	89	-37.8	6	148	66.3	10

Note: Student semester hours reported here may differ slightly from data source due to rounding.

SOURCE: Banner Operational Data Store (ODS), IRO_SOCAD.